

# OneHealth

---

## NEBRASKA





# INDEX BY SPECIALTY

Clinic Phone Numbers . . . . .	4-5	Pain Medicine and Management . . . . .	36
About OneHealth Nebraska . . . . .	6	Palliative Medicine. . . . .	37
OneHealth Nebraska Staff . . . . .	7	Pathology - Laboratory . . . . .	38-39
OneHealth Nebraska IPA Board of Directors . . . . .	7	Pediatrics . . . . .	39-41
OneHealth Nebraska ACO Board of Directors. . . . .	8	Physical and Occupational Therapy . . . . .	42-45
ACO Member Clinics. . . . .	8	Plastic, Cosmetic and Reconstructive Surgery. . . . .	45-46
Allergy and Immunology . . . . .	9	Podiatry . . . . .	47
Anesthesia . . . . .	9	Psychiatry. . . . .	47
Bariatric Medicine/Surgery. . . . .	10	Pulmonary/Sleep Medicine . . . . .	48
Behavioral Health . . . . .	11-12	Radiation Oncology . . . . .	49
Breast Surgery . . . . .	13	Radiology. . . . .	50
Cardiology . . . . .	13	Rheumatology . . . . .	51
Colon and Rectal Surgery . . . . .	14	Urgent Care . . . . .	51
Dermatology . . . . .	14-15	Urology. . . . .	52
Family Medicine. . . . .	16-21	Auburn . . . . .	52-53
Gastroenterology . . . . .	22	Bellevue . . . . .	53-54
General Surgery . . . . .	23-24	Columbus. . . . .	55
Gynecologic Oncology. . . . .	24	Crete . . . . .	56
Hematology Oncology. . . . .	25	David City. . . . .	56
Infectious Diseases . . . . .	26	Fremont . . . . .	56
Internal Medicine . . . . .	26	Grand Island. . . . .	57-59
Interventional Radiology . . . . .	27	Hastings . . . . .	59-61
Lactation Specialist . . . . .	27	Holdrege . . . . .	61
Nephrology . . . . .	28	Kearney. . . . .	62
Neurosurgery. . . . .	29	Lexington . . . . .	63
Obstetrics and Gynecology . . . . .	30-31	North Platte . . . . .	63
Ophthalmology . . . . .	32	Ambulatory Surgery Centers. . . . .	64-66
Oral and Maxillofacial Surgery. . . . .	32	Specialty Hospital . . . . .	66
Orthopaedic - General and Surgery. . . . .	33-34	Preferred Vendors . . . . .	67-68
Orthopaedic - Spine Surgery. . . . .	35	Listing of Clinics. . . . .	69-70
Otolaryngology . . . . .	35	Listing of Providers . . . . .	70-74

# CLINIC PHONE NUMBERS

a1 Family Psychiatry . . . . .	402-817-5813	Family Medical Specialties . . . . .	308-995-4431
Advanced Medical Imaging . . . . .	402-484-6677	Fremont Neurology Specialists . . . . .	402-727-9992
AMI Surgery Center . . . . .	402-261-1085	FYZICAL Therapy & Balance Centers	
Allergy, Asthma and Immunology . . . . .	402-464-5969	S 17th Street . . . . .	402-476-6575
Arthritis Center of Nebraska . . . . .	402-420-1212	N Cotner Blvd . . . . .	402-464-6141
Auburn Family Health Center . . . . .	402-274-4993	Gastroenterology Specialties and Lincoln	
Behavioral Pediatric & Family		Endoscopy Center . . . . .	402-465-4545
Therapy Program, LLC . . . . .	402-483-1936	General Surgery Associates . . . . .	402-483-4292
Bellevue Physical Therapy . . . . .	402-292-4000	Grand Island Clinic . . . . .	308-382-1100
Bluestem Health		Gynecology & Fertility PC . . . . .	402-483-2886
Main . . . . .	402-476-1455	Hastings Internal Medicine Associates . . . . .	402-463-2454
Kreshel Clinic . . . . .	402-477-6600	Heibel Dermatology Clinic, LLC . . . . .	402-488-6969
Thompson Clinic . . . . .	402-474-7445	Henry Cosmetic & Plastic Surgery . . . . .	402-435-0044
Health 360 . . . . .	402-441-6642	Henry Oral & Maxillofacial Surgery . . . . .	402-435-0044
Butler County Clinic . . . . .	402-367-3193	Holy Family Medical Associates . . . . .	402-484-8383
Cancer Partners of Nebraska . . . . .	402-420-7000	Hometown Behavioral Health . . . . .	402-274-4993
Capital Medical Clinic . . . . .	402-488-5050	Innovate Physical Therapy	
Central Nebraska Orthopedics . . . . .	308-384-5400	Bellevue . . . . .	402-682-4210
Children First Pediatrics, PC . . . . .	402-488-7337	Innovative Pain & Spine Specialists . . . . .	402-413-5010
Coddington Medical Family Practice . . . . .	402-438-0101	Integrated Pediatrics, P.C. . . . .	402-834-2438
Columbus Family Practice Associates . . . . .	402-564-1338	Jacobson Cosmetic Surgery . . . . .	531-254-5458
Columbus Medical Center . . . . .	402-564-2816	Katniss Clinic . . . . .	402-405-4942
Complete Children's Health, PC . . . . .	402-465-5600	Lancaster Family Medicine . . . . .	402-826-3222
Complete Family Dermatology . . . . .	402-423-1111	Lincoln Family Medical Group, PC . . . . .	402-488-7400
Comprehensive Pain & Infusion		Lincoln Family Medicine Center . . . . .	402-483-4571
Center, LLC . . . . .	308-252-1447	Lincoln Family Wellness, PC . . . . .	402-488-1400
Consultants in Gastroenterology . . . . .	402-441-5600	Lincoln Internal Medicine Associates . . . . .	402-421-3240
Consultants in Infectious Disease . . . . .	402-489-1110	Lincoln Nephrology and Hypertension . . . . .	402-484-5600
Dermatology Associates of Lincoln, LLC . . . . .	402-413-7460	Lincoln OB/GYN . . . . .	402-483-7641
Doctors of Children . . . . .	402-423-1900	Lincoln Pediatric Group . . . . .	402-489-3834
Ear, Nose and Throat Specialties . . . . .	402-488-5600	Lincoln Physical Therapy and Sports Rehab, LLC	
East Lincoln Family Health		Van Dorn St . . . . .	402-483-4709
Professionals, PC . . . . .	402-483-7507	Pine Lake Road . . . . .	402-421-2700
Edgewood Family Physicians, PC . . . . .	402-421-6200	S 16th . . . . .	402-441-1300
Eye Surgical Associates   Sutton		Superior St . . . . .	402-476-2600
Linder & Sutton . . . . .	402-484-9000	Lincoln Surgical Group PC . . . . .	402-483-7825
Fallbrook Family Health Center . . . . .	402-441-3575	Lincoln Surgical Hospital . . . . .	402-484-9090
Family Health and Wellness Center . . . . .	402-434-5235	Midlands Family Medicine LLP . . . . .	308-534-2532
Family Physicians Group . . . . .	402-467-4661	MidWest Behavioral Health . . . . .	402-327-0073
Family Practice Associates, PC . . . . .	308-865-2767	Midwest Ear, Nose and Throat Specialists . . . . .	402-463-2431
Family Practice of Grand Island . . . . .	308-381-0162	Nebraska Hematology-Oncology . . . . .	402-484-4900
Family Medical Center of Hastings . . . . .	402-463-9697	Nebraska Orthopaedic Center, PC . . . . .	402-436-2000

Nebraska Pain Institute. . . . .	402-488-7246	Star Anesthesia. . . . .	402-423-7774
NPI Surgery Center . . . . .	531-249-5353	Stone Ridge Surgery Center . . . . .	308-455-3091
Nebraska Pulmonary Specialties . . . . .	402-483-8600	Surgical Associates . . . . .	402-441-4760
Nebraska Rural Surgical Associates, LLC . . .	402-834-2450	Sutton Dermatology + Aesthetics. . . . .	402-484-9009
Nebraska Surgery Center. . . . .	402-484-6600	The Lymphedema Clinic	
Nebraska Urology . . . . .	402-489-8888	North and South Lincoln. . . . .	402-904-4474
Nebraska Weight & Wellness . . . . .	531-249-5850	Papillion. . . . .	531-600-7000
Neurological & Spinal Surgery . . . . .	402-488-3002	The Nebraska Ambulatory Surgical Center .	531-249-5030
New Life Clinic. . . . .	402-937-1101	The Nebraska Neurosurgery Group, LLC . . .	402-904-4729
Opportune Acres. . . . .	402-469-8415	Urgent Care Clinic of Lincoln . . . . .	402-488-4321
Pathology Services, PC. . . . .	308-532-4700	Urology Surgical Center . . . . .	402-489-8888
Pathology Medical Services, PC . . . . .	402-465-1900	Women's Health Care Center	
Pediatrics, PC . . . . .	402-489-0800	of Williamsburg . . . . .	402-421-8581
Physicians Laboratory Services . . . . .	402-488-7710		
Physicians' Surgical Center. . . . .	402-488-5812		
Pioneer Heart Institute . . . . .	402-413-6363		
Platte River Foot and Ankle Surgeons . . . . .	402-751-0600		
Plum Creek Medical Group . . . . .	308-324-6386		
Prairie Orthopaedic and Plastic Surgery . . .	402-489-4700		
Primary Care Partners. . . . .	402-483-2987		
Proformance Physical Therapy . . . . .	402-327-9000		
Regenirex, LLC. . . . .	308-237-9696		
Rheumatology and Osteoporosis			
Services . . . . .	402-464-9000		
Saline Medical Specialties . . . . .	402-826-3222		
Solace Behavioral. . . . .	402-261-0235		

# WHO WE ARE

OneHealth Nebraska is an Independent Physician Association dedicated to supporting and growing independent medicine in Nebraska. Our membership includes 98 independent and locally-owned medical clinics representing over 470 Primary Care and Specialty Care Physicians and over 65 Physical and Occupational Therapists.

OneHealth is owned and governed by its members – Independent Physicians. Our members are committed to providing patients with the highest standards of quality care at cost effective prices.

# WHAT WE DO



## CONTRACTING

OneHealth Nebraska has messenger model contracts with select health insurance plans.



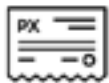
## CREDENTIALING

Partner with Nebraska Health Partners for credentialing expertise that utilizes a one application process.



## PREFERRED VENDORS

Build relationships with local vendors that offer superior and competitive services for our members.



## ASSOCIATION HEALTH PLAN

Employee benefit plan choices for the independent medical clinic.



## ACCOUNTABLE CARE ORGANIZATION

Network of independent physicians and facilities providing coordinated, high quality, cost effective healthcare



## CONTACT US

OneHealth staff is dedicated to supporting your independent practice.

# ONEHEALTH NEBRASKA STAFF



Steve Kros,  
MBA  
**Chief Executive  
Officer**



Brandon Webb,  
MD, FAAFP  
**Chief Medical  
Officer**



Kristin Carmichael,  
RN, MSN, MBA  
**Vice President of  
Value-Based Care**



Megan Erwin-Kvols,  
**Director of Marketing  
& Membership  
Services**

# IPA BOARD OF DIRECTORS



Rahul Razdan,  
MD, FSIR  
**Chair**



Eric Avery,  
MD  
**Vice-Chair**



Rachel Blake,  
MD, FAAFP



Katie Fossen,  
MD, FACOG



Joel Greisen,  
MD, FAAP



Christopher  
Cederberg,  
MD



Jodi Triggs,  
DO, FACP



Brad Webb,  
DO

# ACO BOARD OF DIRECTORS



Rachel Blake,  
MD, FAAFP  
**Chair**



Svjetlana Dzikov,  
MD



Thomas Fischer,  
MD



Sian Jones-Jobst,  
MD, FAAP



Robert Koch,  
MD, FAAP  
**Vice-Chair**



Todd Martin,  
MD



Jason Potts,  
MD



Diane Wilson  
Medicare  
Representative

## ACO Member Clinics

- Auburn Family Health Center
- Bluestem Health
- Butler County Clinic PC
- Capital Medical Clinic
- Children First Pediatrics
- Coddington Medical Family Practice
- Columbus Family Practice Associates
- Columbus Medical Center
- Complete Children's Health
- Doctors of Children
- East Lincoln Family Health Professionals
- Edgewood Family Physicians, PC
- Fallbrook Family Health Center
- Family Health & Wellness Center
- Family Medical Center of Hastings
- Family Physicians Group
- Family Practice Associates
- Family Practice of Grand Island
- Grand Island Clinic
- Hastings Internal Medicine Associates
- Lincoln Family Medicine Center
- Lincoln Family Medical Group
- Lincoln Family Wellness
- Lincoln Internal Medicine Associates
- Lincoln OB/GYN
- Lincoln Pediatric Group
- Midlands Family Medicine, LLP
- New Life Clinic
- Pediatrics, PC
- Plum Creek Medical Group
- Primary Care Partners
- Saline Medical Specialties/Lancaster Family Medicine
- Women's Health Care Center - Williamsburg

# ALLERGY AND IMMUNOLOGY

## ALLERGY, ASTHMA AND IMMUNOLOGY

600 N Cotner Blvd., Suite 208  
Lincoln, NE 68505

3901 Pine Lake Road, Suite 405  
Lincoln, NE 68516

402-464-5969 | Fax: 402-464-3657  
allergyasthmaimm.com

Office Hours:

Monday, Friday: 9 AM - 5 PM | Tuesday, Thursday: 9 AM - 6 PM | Wednesday: 8:30 AM - 5 PM

Administrator: Tina Maranville (tina@allergyasthmaimm.com)



Kirk Kinberg,  
MD



Hannah Neuhaus,  
MD



Susan Pae,  
MD



Petra Razdan,  
MD



Michael Sullivan III,  
MD



Robert Szalewski,  
MD

## ANESTHESIA

### STAR ANESTHESIA

PO Box 67099 | Lincoln, NE 68506  
402-423-7774  
lighthouse-anesthesia.com

Administrator: Crystal Linch  
(crystal@lighthouseanesthesia.net)



Rick Hartwig,  
MD

# BARIATRIC MEDICINE/SURGERY

## FAMILY HEALTH AND WELLNESS CENTER

6825 S. 27th Street, Suite 102 | Lincoln, NE 68512  
402-434-5235 | Fax: 402-489-2137  
fhwclnk.com

Office Hours: Monday - Friday: 8:30 AM - 4:30 PM

Administrators:

Vedrana Dziko (vdziko@fhwclnk.com)

Neven Dziko (ndziko@fhwclnk.com)



Sjetlana Dziko,  
MD



Terra Papik,  
DO

## SURGICAL ASSOCIATES

1001 S 70th St, Suite 100 | Lincoln, NE 68510  
402-441-4760 | Fax: 402-937-7399  
surgicalassociatespc.net

Office Hours: Monday - Friday: 8:30 AM - 5 PM

Administrator:

Joel Gustafson (joel.gustafson@surgicalassociatespc.net)



Benjamin J. Hung,  
MD



Oliver Knoell,  
MD



Anthony Tabatabai,  
DO



Raymond J.  
Taddeucci,  
MD

## NEBRASKA WEIGHT & WELLNESS

5601 Union Hill Road, Suite 1 | Lincoln, NE 68516  
531-249-5850 | Fax: 531-249-1384  
neweightwellness.com

Office Hours:

Monday/Tuesday/Thursday: 8 AM - 4:30 PM

Wednesday/Friday: 8 AM - 12 PM

Administrator: Candice Martin (cmartin@neweightwellness.com)



Sherri Thomas,  
DO

# BEHAVIORAL HEALTH

## BEHAVIORAL PEDIATRIC & FAMILY THERAPY PROGRAM, LLC

1520 S 70th Street, Suite 200 | Lincoln, NE 68506  
402-483-1936 | Fax: 402-483-7314  
bplincn.com

Staff Hours:  
Monday - Friday: 8 AM - 4:30 PM

Administrator: Diane Mohlman (diane@bplincn.com)



Luke Bossard,  
PsyD



Paulette Cary,  
PhD



Ann Clare,  
PhD



Jami Givens,  
PhD



Alicia Herrold,  
PhD



Tracy Kadavy,  
PsyD



Bryan Miller,  
PhD, LIMHP



Amanda Lewis  
PhD, LIMHP



Amanda Setlak,  
PhD



Rhonda Turner,  
PhD



Andrew White,  
PhD



George Williams,  
PhD

## BLUESTEM HEALTH MAIN

1021 N 27th St | Lincoln, NE 68503  
402-476-1455 | Fax: 402-476-1655  
bluestemlincoln.com

Office Hours:  
Monday - Friday: 7 AM - 5 PM

Administrator: Brad Meyer  
(bmeyer@bluestemlincoln.com)



Trey Andrews,  
PhD



Michael Judson,  
Psy.D



Abigail Lamp,  
Psy.D



Nishma Ramos-  
Gonzalez,  
Psy.D

## LINCOLN FAMILY MEDICAL GROUP, PC

7441 O Street, Suite 300 | Lincoln, NE 68510  
402-488-7400 | Fax: 402-488-0739  
lfmgpc.com

Office Hours:  
Monday - Friday: 8:30 AM - 4:30 PM

Administrator: Tasha Luedtke  
(nluedtke@lfmgpc.com)



Kristina Chatwell,  
LMHP



Jennifer Coon,  
LCSW, LMHP



Renee Duffek,  
LIMHP



Suzanne Jouvenat,  
LIMHP, LADC



Tia Nordyke King,  
LIMHP

## MIDWEST BEHAVIORAL HEALTH

1530 S 70th Street, Suite 200 | Lincoln, NE 68506  
402-327-0073 | Fax: 402-327-0204  
mwbehavioral.com

Office Hours:  
Monday - Friday: 8 AM - 5 PM

Administrator: Aaron Stratman  
(astratman@mwbehavioral.com)



Julie Maikranz,  
PhD



Tim Riley,  
PhD



Aaron Stratman,  
PhD

## SOLACE BEHAVIORAL HEALTH & WELLNESS

1541 Center Park Road, Suite 2 | Lincoln, NE 68512  
402-261-0235 | Fax: 402-261-0428  
solacebhw.com

Office Hours:  
Monday - Friday: 8 AM - 5 PM

Administrator: Tara Hansen  
(thansen@solacebhw.com)



Dwight Brown,  
LIMHP



Geralee Olson-  
Triplett,  
LIMHP, LPC, C-AAIS



Marcie Rose,  
OT



Megan Snodgrass,  
LIMHP

# BREAST SURGERY

## ADVANCED MEDICAL IMAGING - SURGERY CENTER

7601 Pioneers Blvd. | Lincoln, NE 68506  
402-484-6677 | Fax: 402-484-6688  
amimaging.com

Office Hours:  
Monday - Friday: 7:30 AM - 5 PM

Administrator: Georgia Blobaum  
(blobaum@amimaging.com)  
(abc@amimaging.com)



Kelsey Williams,  
MD

## SURGICAL ASSOCIATES

1001 S. 70th St, Suite 100 | Lincoln, NE 68510  
402-441-4760 | Fax: 402-937-7399  
surgicalassociatespc.net

Office Hours: Monday - Friday: 8:30 AM - 5 PM

Administrator: Joel Gustafson  
(joel.gustafson@surgicalassociatespc.net)



Greg A. Fitzke, MD

# CARDIOLOGY

## PIONEER HEART INSTITUTE

6940 Van Dorn St, Suite 201 | Lincoln, NE 68506  
402-413-6363 | Fax: 402-413-6691  
pioneerheart.com

Office Hours: Monday - Friday: 8 AM - 4 PM

Administrator: Marie Gouldin (mgouldin@pioneerheart.com)



Kaliprasad Ayala,  
MD, FACC



Harpaul Bajwa,  
MD, FACC



Denes Korpas,  
MD, FACC



Steven Martin,  
MD, FACC



Douglas Netz,  
MD, FACC



Rebecca Rundlett,  
MD, FACC

# COLON AND RECTAL SURGERY

## SURGICAL ASSOCIATES

1001 S. 70th St, Suite 100 | Lincoln, NE 68510  
402-441-4760 | Fax: 402-937-7399  
surgicalassociatespc.net

Office Hours:  
Monday - Friday: 8:30 AM - 5 PM

Administrator: Joel Gustafson  
(joel.gustafson@surgicalassociatespc.net)



Michael A. Jobst,  
MD



Kelly J. Krier,  
MD



James O. Markman,  
MD

# DERMATOLOGY

## COMPLETE FAMILY DERMATOLOGY

### South Location

8040 S 13th Street  
Lincoln, NE 68512

### North Location

5790 N 33rd Street  
Lincoln, NE 68504

402-423-1111 | 866-868-3112 | Fax: 402-423-0365  
completefamilydermatology.com

Office Hours:  
Monday - Thursday: 8 AM - 5 PM | Friday: 8 AM - 2 PM

Administrator: Becca Basler (administrator@completefamilydermatology.com)

**Also Serving:** Beatrice, Blair, Crete, Falls City, Fremont,  
Geneva, Hastings, Nebraska City, York.



Geoffrey Basler,  
MD

## DERMATOLOGY ASSOCIATES OF LINCOLN, LLC

6969 South Street | Lincoln, NE 68506  
402-413-7460 | Fax: 402-413-7486  
LNKderm.com

Office Hours:  
Monday, Wednesday - Friday: 8 AM - 5 PM  
Tuesday: 7 AM - 5 PM

Administrator: Janel Fricke  
(jzfricke@LNKderm.com)



Casey Bowen,  
MD



Gina L. Weir,  
MD

# HEIBEL DERMATOLOGY CLINIC, LLC

7701 Preserve Lane | Lincoln, NE 68516  
402-488-6969 | Fax: 402-488-6911  
heibelderm.com

**Office Hours:**

Monday, Wednesday: 7 AM - 5 PM  
Tuesday: 8 AM - 5 PM  
Thursday: 9 AM - 5 PM  
Friday: 8:30 AM - 4 PM



Mark Heibel,  
MD

Administrator: Erin Cowell (heibeldermatology@gmail.com)

# SUTTON DERMATOLOGY + AESTHETICS

**South location:**

7100 Stephanie Lane  
Lincoln, NE 68516

**Office hours:**

Monday - Thursday:  
8 AM - 5 PM  
Friday: 8 AM - 3 PM

**North location:**

5100 N. 26th Street  
Lincoln, NE 68521

**Office hours:**

Monday: 8 AM - 5 PM  
Tuesday: 9 AM - 4 PM  
Wednesday: 8:30 AM - 5:30 PM  
Thursday: 8 AM - 4:30 PM  
Friday: 8 AM - 3 PM

**L Street location:**

6900 L Street  
Lincoln, NE 68510

**Office hours:**

Monday: 8 AM - 3 PM  
Tuesday: 8 AM - 4:30 PM  
Wednesday: 8 AM - 4:30 PM  
Thursday: 8 AM - 5 PM  
Friday: 8 AM - 3 PM

suttonderm.com

402-484-9009 | Fax: 402-483-4223

Administrator: Andrea Schultz (aschultz@suttonderm.com)



Jessica Harms,  
MD



Elizabeth Sutton,  
MD



Leigh Sutton,  
MD



Margaret Kontras  
Sutton,  
MD

# FAMILY MEDICINE

## BLUESTEM HEALTH

bluestemlincoln.com

Administrator: Brad Meyer (bmeyer@bluestemlincoln.com)

### Main

1021 N 27th St | Lincoln, NE 68503  
402-476-1455 | Fax: 402-476-1655  
Office Hours: Monday - Friday: 7 AM - 5 PM

### Thompson Clinic

2222 S. 16th St, Suite 435 | Lincoln, NE 68502  
402-474-7445 | Fax: 402-474-4792  
Office Hours: Monday - Thursday: 7 AM - 5 PM

### Kreshel Clinic

3100 N 14th St | Lincoln, NE 68521  
402-477-6600 | Fax: 402-477-7369  
Office Hours: Monday - Friday: 8:30 AM - 5 PM

### Bluestem Health Pediatrics

2301 O St, Suite 2 | Lincoln, NE 68510  
402-441-6642 | Fax: 402-476-1655  
Office Hours: Monday - Friday: 8 AM - 5 PM



Horacio Alvarez  
Ramirez,  
MD



Bich Chau,  
MD



Michael Israel,  
MD



Heather Kleeman,  
DO



Charles Kreshel,  
MD



Erica Peterson,  
MD, MHP



Humaira Qasimyar,  
MD



Adam Rasmussen,  
MD



Andrew Shahan,  
MD



Brett Wergin,  
MD

## CAPITAL MEDICAL CLINIC

4701 Normal Blvd | Lincoln, NE 68506  
402-488-5050 | Fax: 402-488-5001  
capitalmedicalclinicllp.com

Office Hours:  
Monday - Friday: 8:00 AM - 5 PM

Administrator: David Cory  
(dave@capitalmedicalclinicllp.com)



Dorothea Jacobsen,  
MD



Lisa Peterson,  
MD



Uma Nooka,  
MD



Gary Van Ert,  
MD

## **CODDINGTON MEDICAL FAMILY PRACTICE**

1336 West A St, Suite A | Lincoln, NE 68522  
402-438-0101 | Fax: 531-278-1213  
coddingtonmed.com

### Office Hours:

Monday - Tuesday: 7:30 AM - 6 PM  
Wednesday: 7:30 AM - 5:30 PM  
Thursday: 7:30 AM - 5 PM  
Friday: 7:30 AM - 4:30 PM  
Saturday: 8:30 AM - 12 PM



Timothy Sullivan,  
MD

Administrator: Charlene Fangmeier (charlenecmf@gmail.com)

## **EAST LINCOLN FAMILY HEALTH PROFESSIONALS, PC**

4525 S 86th St, Suite B | Lincoln, NE 68526  
402-483-7507 | Fax: 402-483-6899  
eastlincolnhealth.com

### Office Hours:

Monday - Friday: 8 AM - 5 PM

Administrator: Tami Kuehn-Damme  
(tamik-d@eastlincolnhealth.com)



Bradley Sawtelle,  
MD

## **EDGEWOOD FAMILY PHYSICIANS, PC**

5200 S 56th St, Suite 2 | Lincoln, NE 68516  
402-421-6200 | Fax: 402-421-6070  
efppc.com

### Office Hours:

Monday - Thursday: 8 AM - 4:30 PM  
Friday: 8 AM - 12 PM

Administrator: Julie Huffman (jhuffman@efppc.com)



Michael Huffman,  
MD

## **FALLBROOK FAMILY HEALTH CENTER**

755 Fallbrook Blvd., Suite 100 | Lincoln, NE 68521  
402-441-3575 | Fax: 402-438-2107  
fallbrookfamilyhealthcenter.com

### Office Hours:

Monday - Thursday: 7 AM - 7 PM  
Friday: 7 AM - 5 PM | Saturday: 9 AM - 12 PM

Administrator: Dinah Tong  
(administration@fallbrookfamily.com)



April Brinkhoff,  
MD, FAAFP



Tyson Carlson,  
MD



Steven Saathoff,  
MD

## FAMILY HEALTH AND WELLNESS CENTER

6825 S 27th St, Suite 201 | Lincoln, NE 68512  
402-434-5235 | Fax: 402-489-2137  
fhwclnk.com

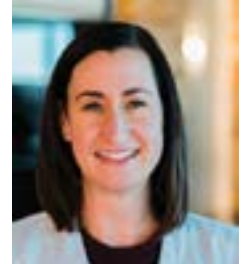
Office Hours: Monday - Friday: 8:30 AM - 4:30 PM

Administrators:

Vedrana Dziko (vdziko@fhwclnk.com)  
Neven Dziko (ndziko@fhwclnk.com)



Sjetlana Dziko,  
MD



Terra Papik,  
DO

## FAMILY PHYSICIANS GROUP

770 N Cotner Blvd., Suite 205 | Lincoln, NE 68505  
402-467-4661 | Fax: 402-467-5006  
fpg-lincoln.com

Office Hours: Monday - Friday: 7:30 AM - 5 PM

Administrator:

Jennifer Powell (jenniferp@fpg-lincoln.com)



Thomas Fischer,  
MD



Peter Morin,  
MD, FAAFP



Thao Nguyen,  
MD, MPH

## HOLY FAMILY MEDICAL ASSOCIATES

7121 Stephanie Lane, Suite 105 | Lincoln, NE 68516  
402-484-8383 | Fax: 402-484-7043  
hfmane.com

Office Hours:

Monday - Friday: 8 AM - 5 PM

Administrator:

Danielle Funcke  
(dfuncke@hfmane.com)



Timothy Fischer,  
MD



Arthur Grinstead,  
MD



Michael Schulte,  
MD



Richard Wurtz,  
MD

## LANCASTER FAMILY MEDICINE

4911 N 26th St, Suite 106 | Lincoln, NE 68521  
402-826-3222 | Fax: 402-826-3228  
lancasterfamilymedicine.org

Office Hours: Monday and Friday: 8 AM - 7 PM

Tuesday - Thursday 8 AM - 5 PM

Administrator: Ericka Ischiu (eischiu@smscrete.com)



Josue Gutierrez,  
MD

# LINCOLN FAMILY MEDICAL GROUP, PC

7441 O Street, Suite 300 | Lincoln, NE 68510  
402-488-7400 | Fax: 402-488-0739  
lfmgpc.com

Office Hours:  
Monday - Friday: 8:30 AM - 4:30 PM

Administrator: Tasha Luedtke  
(nluedtke@lfmgpc.com)



Linsey Haden,  
DO, FAAFP



Christine Keim,  
MD



Alisa Nollendorfs,  
MD, PhD



Jared Pehrson,  
MD

# LINCOLN FAMILY MEDICINE CENTER

4600 Valley Road, Suite 200 | Lincoln, NE 68510  
402-483-4571 | Fax: 402-483-5633  
lincolnfamilymedicine.com

Office Hours:  
Monday - Friday: 8 AM - 5 PM

Administrator:  
Brenda Post (bpost@lmep.com)

## FACULTY PHYSICIANS



Sabrina Cerny,  
MD, ABFM, FAAFP  
**Program Director**



Wade Fornander,  
MD, ABFM  
**Medical Director**



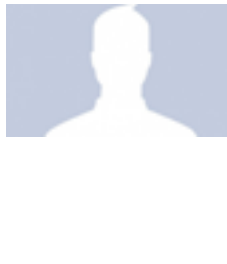
Jeffery Hollis,  
MD, ABFM



Matthew Jacobsen,  
MD, ABFM



Jack Lionberger,  
MD, PhD, ABIM



Benjamin Martin,  
MD, ABFM



Beth Sanley,  
MD, ABFM



Douglas States,  
MD, ABFM

# FAMILY MEDICINE RESIDENTS



Yamini Arukala,  
MBBS

**3rd Year Resident**



Matthew Belleville,  
MD

**3rd Year Resident**



Molly Creevan,  
DO

**3rd Year Resident**



Nicklaus Hanlan,  
DO

**3rd Year Resident**



Izdeen Ilyas,  
MBChB

**3rd Year Resident**



Philip Stark,  
MD

**3rd Year Resident**



Alaini Wallen,  
DO

**3rd Year Resident**



Jonathan Wood,  
MD

**3rd Year Resident**



Elizabeth Dodson,  
MBBS

**2nd Year Resident**



Kuliari Jumaah,  
MBChB

**2nd Year Resident**



Garret Lorenzen,  
MD

**2nd Year Resident**



Jackson Morrison,  
DO

**2nd Year Resident**



Daniel Owen,  
DO

**2nd Year Resident**



Dipika,  
Raghuraman, DO

**2nd Year Resident**



Valentine Santarlas,  
DO

**2nd Year Resident**



Emily Sullivan,  
DO

**2nd Year Resident**



Luke Blomenberg,  
MD

**1st Year Resident**



Hale Breit,  
DO

**1st Year Resident**



Anna Dorhout,  
MD

**1st Year Resident**



Kristy Johnson,  
DO

**1st Year Resident**



Luke Krajewski,  
MD

**1st Year Resident**



Viola Kroeger,  
DO

**1st Year Resident**



Seth Ostdiek,  
MD

**1st Year Resident**



Aly Schroder,  
DO

**1st Year Resident**

# LINCOLN FAMILY WELLNESS, P.C.

1101 South 70th St, Suite 101 | Lincoln, NE 68510  
402-488-1400 | Fax: 402-488-3879  
lincolnfamilywellness.com

## Office Hours:

Monday - Friday: 8 AM - 5 PM  
Saturday: 8 AM - 11:30 AM

Administrator: Cortny Sinks (csinks@lincolnfamilywellness.com)



Ben Biehl,  
MD



Timothy Dalton,  
MD



Kyle Haefele,  
MD



Michelle Manning,  
MD



Janet Sellon,  
MD

# NEW LIFE CLINIC

4501 S 70th St, Suite 110 | Lincoln, NE 68516  
402-937-1101 | Fax: 402-937-1151  
newlifecliniclincoln.com

Office Hours: Monday - Friday: 8 AM - 4 PM

Administrator: Johnny Martinez  
(Johnny@newlifecliniclincoln.com)



Jenna Cook,  
MD

# PRIMARY CARE PARTNERS

4130 Pioneer Woods Drive, Suite 2  
Lincoln, NE 68506

402-483-2987 | Fax: 402-483-2980  
primarycarepartnersne.com

Office Hours:  
Monday-Thursday: 7 AM - 7 PM  
Friday: 7 AM - 5 PM  
Saturday: 8 AM - 12 PM (Urgent Care)

Administrator: Lisa Mascher  
(lisam@primarycarepartnersne.com)

4424 S 86th St  
Lincoln, NE 68526

1240 Aries Dr.  
Lincoln, NE 68512



Rachel Blake,  
MD, FAAFP



James Carraher,  
MD



Nathan DeNell,  
DO



Derek Hutchins,  
MD



Susan Johnson,  
MD



John Majerus,  
MD



Aubrey Walker,  
DO



Brandon Webb,  
MD, FAAFP



Scott Wilson,  
MD

# GASTROENTEROLOGY

## CONSULTANTS IN GASTROENTEROLOGY

6900 L Street, Suite 1 (lower level) | Lincoln, NE 68510  
402-441-5600 | Fax: 402-441-5606  
consultantsingastro.com

Office Hours: Monday - Friday: 8:30 AM - 4:30 PM

Administrator:  
JoDee Hunt (jodee@cigpc.com)



David Lee,  
MD

## GASTROENTEROLOGY SPECIALTIES AND LINCOLN ENDOSCOPY CENTER

4545 R Street | Lincoln, NE 68503  
402-465-4545 | Fax: 402-465-9011  
Confirmation Line: 402-465-4573

Office Hours: Monday - Friday: 7:15 AM - 4:30 PM  
Administrator: Nate Kreifels (nkreifels@gidocs.net)  
gidocs.net



Clark Antonson,  
MD, FACC



Erik Bowman,  
MD



Mark Griffin,  
MD



Matthew Hrnicek,  
MD



Sally Knooihuizen,  
MD



William Lawton,  
MD



David Newton,  
MD



Paul Petersen,  
MD



Alexander Praus,  
MD



Christopher Rife,  
MD



James Roat,  
MD



Michael Roth,  
MD



J. Reggie Thomas,  
DO



Jean Thomsen,  
MD



Laura Vance,  
DO



Mark Wells,  
MD

## GENERAL SURGERY ASSOCIATES

1101 S 70th St, Suite 100 | Lincoln, NE 68510  
402-483-4292 | Fax: 402-483-4735  
gsalincoln.com

Office Hours: Monday - Friday: 7:30 AM - 4:30 PM

Administrator:  
Megan Niemeyer (megan@gsalincoln.com)



John Fallick,  
MD



Weston Keller,  
MD



Stephen  
Nagengast,  
MD



Brad Olberding,  
MD, FACS



Clint Rathje,  
DO, MBA

## LINCOLN SURGICAL GROUP PC

575 S. 70th, Suite 405 | Lincoln, NE 68510  
402-483-7825 | Fax: 402-483-7839  
lincolnsurgicalgroup.com

Office Hours:  
Monday - Thursday: 8 AM - 5 PM | Friday: 8 AM - 1 PM

Administrator: Melissa Rosene  
(mrosene@lincolnsurgicalgroup.com)



Zijun Hao,  
MD, FACS



Edmundo Rivera,  
MD



Charles Voigt,  
MD

## **SURGICAL ASSOCIATES**

1001 S 70th St, Suite 100 | Lincoln, NE 68510

402-441-4760 | Fax: 402-937-7399

surgicalassociatespc.net

Office Hours: Monday - Friday: 8:30 AM - 5 PM

Administrator:

Joel Gustafson (joel.gustafson@surgicalassociatespc.net)



Greg Fitzke,  
MD



Benjamin J. Hung,  
MD



Oliver Knoell,  
MD



Anthony Tabatabai,  
DO



Raymond J.  
Taddeucci,  
MD

## **GYNECOLOGIC ONCOLOGY**

### **CANCER PARTNERS OF NEBRASKA**

4101 Tiger Lily Road, Suite 100 | Lincoln, NE 68516

402-420-7000 | Fax: 402-420-6969

cancerpartners.com

Office Hours:

Monday - Thursday: 8 AM - 5 PM

Friday: 8 AM - 4 PM

Administrator:

Justin Rousek (justinr@cancerpartners.com)



Kathryn Kennedy,  
MD, FACOG

# HEMATOLOGY ONCOLOGY

## CANCER PARTNERS OF NEBRASKA

### Lincoln Location

4101 Tiger Lily Road, Suite 100 | Lincoln, NE 68516  
402-420-7000 | Fax: 402-420-6969  
cancerpartners.com

### Office Hours:

Monday-Thursday: 8 AM - 5 PM

Friday: 8 AM - 4 PM

### Administrator:

Justin Rousek (justinr@cancerpartners)



Steven Dunder,  
MD



Nathan Green,  
DO



Brett Grieb,  
MD



Stacey Knox,  
MD



Scott McHam,  
DO



Cary Peterson,  
MD



Joni Tilford,  
MD



Irfan Vaziri,  
MD



Haris Zahoor,  
MD

## NEBRASKA HEMATOLOGY-ONCOLOGY

4004 Pioneer Woods Drive | Lincoln, NE 68506  
402-484-4900 | Fax: 402-484-6456  
youcancercare.com

### Office Hours:

Monday - Thursday: 8 AM - 5 PM

Friday: 8 AM - 3 PM

Administrator: Lisa Jansen (ljansen@youcancercare.com)



Eric Avery,  
MD



Madhu Midathada,  
MD



Kailash  
Mosalpuria,  
MD, MPH, FACP

# INFECTIOUS DISEASES

## CONSULTANTS IN INFECTIOUS DISEASE

1500 S 48th St, Suite 506 | Lincoln, NE 68506  
402-489-1110 | Fax: 402-489-8492  
cidlincoln.com

Office Hours:  
Monday - Thursday: 8 AM - 4:30 PM  
Friday: 8 AM - 1:30 PM

Administrator:  
Vicki Rittenhouse (vrittenhouse@cidlincoln.com)



James Nora,  
MD



Steven  
Rademacher,  
MD



Daniel Smith,  
MD

# INTERNAL MEDICINE

## LINCOLN INTERNAL MEDICINE ASSOCIATES

3901 Pine Lake Road, Suite 220 | Lincoln, NE 68516  
402-421-3240 | Fax: 402-423-07339  
limadocs.com

Office Hours:  
Monday - Friday: 7:30 AM - 4:30 PM

Administrator:  
Brenda Soto (bsoto@limadocs.com)



Kenneth Cheloha,  
MD



Scott Ingham,  
MD



Ritoo Jain,  
MD



Holly McMillan,  
MD



Michael Pace,  
MD, FACP



Lewis Plachy,  
MD, FACP



Jason Potts,  
MD



Mark Reida,  
MD



Shawn Semin,  
MD



Gerold Stark,  
MD



Jodi Triggs,  
DO, FACP

# INTERVENTIONAL RADIOLOGY

## ADVANCED MEDICAL IMAGING - SURGERY CENTER

7601 Pioneers Blvd. | Lincoln, NE 68506  
402-484-6677 | Fax: 402-484-6688  
amimaging.com

Office Hours:  
Monday - Friday: 7:30 AM - 5 PM

Administrator:  
Georgia Blobaum (blobaum@amimaging.com)



Quinton Kelly,  
MD, RPVI



Rahul Razdan,  
MD, FSIR



Eric Vander Woude,  
MD, RPVI, DABVLM

# LACTATION SPECIALIST

## LINCOLN PEDIATRIC GROUP

5625 S 62nd St, Suite 100 | Lincoln, NE 68516  
402-489-3834 | Fax: 402-489-5049  
lincolnpediatricgroup.com

Office Hours:  
Monday - Friday: 8 AM - 4 PM

Administrator:  
Matthew Huff (Mhuff@lpgmd.com)



Kay Anderson,  
MD, FAAP, IBCLC

# NEPHROLOGY

## LINCOLN NEPHROLOGY AND HYPERTENSION

7401 O Street | Lincoln, NE 68510  
402-484-5600 | Fax: 402-484-5630  
lincolnnephrology.com

Office Hours:

Monday - Thursday: 8 AM - 12 PM, 1 PM - 4:30 PM | Friday: 8 AM - 12 PM, 1 PM - 4 PM

Administrator: John Reinsch (john@lincolnnephrology.com)



Michael Aaronson,  
MD



Rachel Brock,  
DO



Elizabeth Carthel,  
MD



Stephanie Gawel,  
DO



Matthew Glathar,  
MD



Sophia Knoell,  
MD



Leslie Spry,  
MD, FACP, FASN,  
FNKF



Kaleb Thomas,  
MD



Son Tran,  
MD, FASN



Rugmini Warriar,  
MD



Y. Frank Zhang,  
MD

# NEUROSURGERY

## NEUROLOGICAL & SPINAL SURGERY

2222 S 16th St, Suite 305, Medical Tower B | Lincoln, NE 68502  
402-488-3002 | Fax: 402-483-8787  
nssne.com

Office Hours: Monday - Thursday: 8 AM - 4:30 PM  
Friday: 8 AM - 4 PM (appointments until 12 PM)

Administrator:  
Mel Brown (mbrown@nssne.com)



David S. Diamant,  
MD  
Physiatrist



Steven L. Gogela,  
MD



J. Chris Hawkins II,  
DO



Jeremy R. Hosein,  
MD



Andrew D.  
Livingston,  
MD

## THE NEBRASKA NEUROSURGERY GROUP, LLC

5620 S 27th Street, Suite 100 | Lincoln, NE 68512  
402-904-4729 | Fax: 402-904-5243  
nebraskaneurosurgery.net

Office Hours: Monday - Friday: 8 AM - 5 PM

Administrator:  
Carla Lauenstein (clauenstein@nebraska-asc.com)



Benjamin J.  
Bixenmann,  
MD, FAANS



Daniel J. Tomes,  
MD, FAANS

# OBSTETRICS AND GYNECOLOGY

## GYNECOLOGY & FERTILITY PC

1500 S 48th Street, Suite 508 | Lincoln, NE 68506  
402-483-2886 | Fax: 402-489-9684  
gfertpc.com

Office Hours: Monday - Thursday: 8:30 AM - 4:30 PM  
Friday: 8:30 AM - 11:45 AM

Administrator: Andrea Eggleston (andreae@gfertpc.com)



Sarah Cada,  
MD, FACOG



Darla Eisenhauer,  
MD, FACOG



Katie Fossen,  
MD, FACOG



Nicolle Mahoney,  
MD, FACOG



Jenna Van Pelt,  
MD, FACOG

## LINCOLN OB/GYN

9110 Andermatt Drive, Suite 2  
Lincoln, NE 68526

5100 N 26th St, Suite 200  
Lincoln, NE 68521

402-483-7641 | Fax: 402-483-0527  
lincolnobgyn.com

Office Hours:  
Monday-Thursday: 8:30 AM - 5 PM  
Friday: 8:30 AM - 12:30 PM

Administrator: Julie Robbins (julie@lincolnobgyn.com)



Yvonne Davenport,  
MD, FACOG



Gregory Heidrick,  
MD, FACOG



Dennis Hodge,  
MD, FACOG



Chandra Ljunggren,  
MD, FACOG



Alicia Muhleisen,  
MD, FACOG



Jessica Sandmeier,  
DO, FACOG

## NEW LIFE CLINIC

4501 S 70th St, Suite 110 | Lincoln, NE 68516  
402-937-1101 | Fax: 402-937-1151  
newlifecliniclincoln.com

Office Hours: Monday - Friday: 8 AM - 4 PM

Administrator: Johnny Martinez  
(Johnny@newlifecliniclincoln.com)



Alecia Martinez,  
MD, FACOG

## WOMEN'S HEALTH CARE CENTER OF WILLIAMSBURG

6050 Village Drive | 6120 Village Drive  
Lincoln, NE 68516 | Lincoln, NE 68516

402-421-8581 | Fax: 402-421-8594  
gsodocs.com

Office Hours:  
Monday - Friday: 8 AM - 5 PM

Administrator: Sarah Dunbar (sdunbar@gsodocs.com)



Rachel Anderson,  
DO



Jessica Farlee,  
MD



Todd Martin,  
MD



Emily Neri,  
MD



Debra Placek,  
MD



Jeffrey Tomjack,  
MD

# OPHTHALMOLOGY

## EYE SURGICAL ASSOCIATES | SUTTON LINDER & SUTTON

### Main Clinic

1710 S 70th Street  
Lincoln, NE 68506

### Dr. Thomas Graul

1610 S 70th Street, Suite 200  
Lincoln, NE 68506

### Dr. Donald Sauberan

7001 A Street, Suite 107  
Lincoln, NE 68510

402-484-9000 | Fax: 402-483-4223  
esa-neb.com | suttonlinder.com

Office Hours: Monday-Thursday: 8 AM - 5 PM | Friday: 8 AM - 4 PM

Administrator: Robb Linafelter (rlinafelter@lincolnsurgery.com)



Colby Argo,  
MD



Daniel Chruscicki,  
MD



Thomas Clark,  
MD



Thomas Graul,  
MD



Kaylyn Jackman,  
OD



Alexis Lambert,  
OD



Jordan Rixen,  
MD



Donald Sauberan,  
MD



Gregory Sutton,  
MD



Vincent Sutton,  
MD



Samuel Thomsen,  
MD



Matthew Wood,  
MD

# ORAL AND MAXILLOFACIAL SURGERY

## HENRY ORAL & MAXILLOFACIAL SURGERY

2222 S 16th Street, Suite 300 (Tower A) | Lincoln, NE 68502  
402-435-0044 | Fax: 402-435-7010  
lincolnoralsurgery.com

Office Hours: Monday - Thursday: 8 AM - 5 PM | Friday: 8 AM - 3 PM

Administrator: Darcy Parr (darcy@drhenrys.com)



Mitchell J. Henry,  
DDS, MD

# ORTHOPAEDIC - GENERAL AND SURGERY

## NEBRASKA ORTHOPAEDIC CENTER, PC

### St. Elizabeth Medical Plaza

575 S 70th, Suite 200 | Lincoln, NE 68510  
402-436-2000 | Fax: 402-436-2086  
nebraskaortho.com

### \*NEW LOCATION COMING 2026 - 3255 Salt Creek Circle | Lincoln, NE 68504

Office Hours: Monday - Friday: 8 AM - 5 PM  
Chief Executive Officer: Suzi Gausman (sgausman@nebraskaortho.com)



Aaron Bott,  
MD



David Clare,  
MD



Daniel Cullan II,  
MD



Matthew Freeman,  
MD



James Gallentine,  
MD



Justin Harris,  
MD



Sukchan Lee,  
MD



Jake Long,  
MD



Joseph Mulka,  
MD, PhD



Daniel Ripa,  
MD



Adam Streit,  
DO



Scott Swanson,  
MD



Dane Todd,  
MD



Steven Volin,  
MD



Steven Wahlmeier,  
MD

# NEBRASKA ORTHOPAEDIC CENTER, PC

## 70th & A

6900 A Street | Lincoln, NE 68510  
402-436-2000 | Fax: 402-436-2086  
nebraskaortho.com

Office Hours: Monday - Friday: 8 AM - 5 PM

NOC Ortho Quick Care Hours: Monday - Friday: 8 AM- 8 PM/ Saturday-Sunday: 10 AM - 2 PM

Chief Executive Officer: Suzi Gausman (sgausman@nebraskaortho.com)



Michael Bokemper,  
MD



Nicholas Gove,  
MD



Douglas Koch,  
MD



Keith Lawson,  
MD



Brandon Seifert,  
MD



Adam Streit,  
DO



Douglas Tewes,  
MD



Robert Vande  
Guchte,  
MD



Nick Van Roekel,  
MD



Brad Webb,  
DO



Jason Weber,  
MD



Benjamin  
Woodhead,  
DO

# PRAIRIE ORTHOPAEDIC AND PLASTIC SURGERY

## South Location

4130 Pioneer Woods Drive, Suite 1  
Lincoln, NE 68506

402-489-4700 | Fax: 402-489-5220  
prairie-ortho.com

Office Hours:

Monday - Friday: 8 AM - 4:30 PM

Ortho Express Care Hours:

Monday - Friday: 8 AM - 4:30 PM

Administrator:

Kevin Hejtmanek (Khejtmanek@prairie-ortho.com)

## North Location

5901 N 28th Street  
Lincoln, NE 68504



Matthew Byington,  
DO



Patrick Hurlbut,  
MD



Gustavo Machado,  
MD

# ORTHOPAEDIC - SPINE SURGERY

## NEBRASKA ORTHOPAEDIC CENTER, PC

### St. Elizabeth Medical Plaza

575 S 70th, Suite 200 | Lincoln, NE 68510

402-436-2000 | Fax: 402-436-2086

nebraskaortho.com

### 70th & A

6900 A Street | Lincoln, NE 68510

Office Hours: Monday - Friday: 8 AM - 5 PM

Chief Executive Officer: Suzi Gausman (sgausman@nebraskaortho.com)



Daniel Ripa,  
MD



Robert Vande  
Guchte,  
MD



Steven Volin,  
MD



Steven Wahlmeier,  
MD



Brad Webb,  
DO

# OTOLARYNGOLOGY

## EAR, NOSE AND THROAT SPECIALTIES

5055 A Street, Suite 300 | Lincoln, NE 68510

402-488-5600 | Fax: 402-488-7649

entspecialties.com

Office Hours:

Monday - Thursday: 8:30 AM - 4:30 PM

Friday: 8:30 AM - 1 PM

Administrator: Augusta Tanner (atanner@entspecialties.com)



Jenna Berg,  
MD



Rebecca Bowen,  
MD



Christopher  
Cederberg,  
MD



Nichole Hejtmanek,  
DO



Benton Nelson,  
MD



Kate Rosenberger,  
MD



Dana Wolfe,  
MD

# PAIN MEDICINE AND MANAGEMENT

## ADVANCED MEDICAL IMAGING - SURGERY CENTER

7601 Pioneers Blvd. | Lincoln, NE 68506  
402-484-6677 | Fax: 402-484-6688  
amimaging.com

Office Hours:  
Monday - Friday: 7:30 AM - 5 PM

Administrator:  
Georgia Blobaum (blobaum@amimaging.com)



Quinton Kelly,  
MD, RPVI



Rahul Razdan,  
MD, FSIR



Eric Vander Woude,  
MD, RPVI, DABVLM

## INNOVATIVE PAIN & SPINE SPECIALISTS

### Lincoln Location

7121 Stephanie Lane, Suite 102  
Lincoln, NE 68516

402-413-5010 | Fax: 402-413-5009  
innovativepainnebraska.com

Office Hours:  
Monday - Thursday: 7:30 AM - 4 PM  
Friday: 7:30 AM - 1 PM

Administrator:  
Keeli Chicoine (kchicoine@ipneb.com)

### Omaha Location

17021 Lakeside Hills Plz, Suite 100  
Omaha, NE 68130



Clayton Damme,  
MD



Phillip Essay,  
MD



Redgy Fuller,  
MD



Kelly Zach,  
MD

## NEBRASKA PAIN INSTITUTE

7350 Willowbrook Lane | Lincoln, NE 68516  
402-488-7246 | Fax: 402-488-7247  
nebraskapaininstitute.com

Office Hours:  
Monday - Friday: 8 AM - 4:30 PM

Administrator:  
Melissa Bell (melissa@nebraskapaininstitute.com)



Douglas Spurgeon,  
MD



C. Weston Whitten,  
MD

## CANCER PARTNERS OF NEBRASKA

4101 Tiger Lily Road, Suite 100 | Lincoln, NE 68516  
402-420-7000 | Fax: 402-420-6969  
cancerpartners.com

Office Hours:  
Monday-Thursday: 8 AM - 5 PM  
Friday: 8 AM - 4 PM

Administrator:  
Justin Rousek (justinr@cancerpartners.com)



Mark Stavas,  
MD

## NEBRASKA HEMATOLOGY-ONCOLOGY

4001 Pioneer Woods Drive | Lincoln, NE 68506  
402-484-4900 | Fax: 402-484-6456  
yourcancercare.com

Office Hours:  
Monday - Thursday: 8 AM - 5 PM  
Friday: 8 AM - 3 PM

Administrator:  
Lisa Jansen (Ljansen@yourcancercare.com)



Amanda  
Woodward,  
MD

# PATHOLOGY - LABORATORY

## PATHOLOGY MEDICAL SERVICES, PC

5440 South Street, Suite 200 | Lincoln, NE 68506  
402-465-1900 | Fax: 402-465-1940  
pmspc.org

Office Hours: Monday - Friday: 8 AM - 5 PM

Administrator: Pamela Rust (rustp@pmspc.org)



Corey Allard,  
DO



Thomas Buttolph,  
MD



Ryan DeHaan,  
MD



Neil Fuehrer,  
MD



Darrell (Darek)  
Lester, Jr.,  
MD



Minh Yen Mays,  
MD



Lauren Murer,  
MD



Charles Reese,  
MS, MD



Jon Steinhauer,  
MD



Tyler Teichmeier,  
MD



Brian Toalson,  
MD

## PATHOLOGY SERVICES, PC

### Omaha Location

2121 N. 117th Ave | Omaha, NE 68164  
402-242-6562 | Fax: 402-546-9750  
Office Hours: Monday-Friday: 7:30 AM-5:00 PM  
Saturday: 7:30 AM-5:00 PM

Administrator: Kacey Moreland  
(kmoreland@interpathlab.com)

### North Platte Locations

1931 W A Street | North Platte, NE 69101  
611 W Francis Street | North Platte, NE 69101  
308-532-4700 | Fax: 308-534-0534

pathologyservices.com

Administrator: Dianna Brouillette  
(djb@pathologyservices.com)



Byron Barksdale,  
MD



Barry Javadzadeh,  
MD



Yongchao Li,  
MD



Nicholas Lintel,  
MD

# PHYSICIANS LABORATORY SERVICES

## Lincoln Location

7441 O Street, Suite 100 | Lincoln, NE 68510  
402-488-7710 | Fax: 402-488-6941

Office Hours: Monday - Friday: 7:30 AM - 5:30 PM  
Saturday: 8 AM - 12 PM

physlab.com

Administrator:

Patsi Tobey ptobey@physlab.com

Jeremy Berg  
MD

Robert Bowen,  
MD

Joslin Carson,  
MD

Michelle Elieff,  
MD

David Jaskierny,  
MD

Erin Linde,  
MD

Wayne Markus,  
MD

Suzette  
Woodward, MD

## Omaha Location

4840 F Street | Omaha, NE 68117  
402-731-4145 | Fax: 402-731-8653

Office Hours: Monday - Friday: 8 AM - 5 PM  
Saturday: 8 AM - 12 PM

## PEDIATRICS

### BLUESTEM HEALTH PEDIATRICS

2301 O Street Suite 2 | Lincoln, NE 68510  
402-477-6600 | Fax: 402-477-7369  
bluestemlincoln.com

Office Hours:

Monday - Friday: 8:30 AM - 5 PM

Administrator: Brad Meyer (bmeyer@bluestemlincoln.com)



Erica Peterson,  
MD



Humaira Qasimyar,  
MD

### CHILDREN FIRST PEDIATRICS, PC

3901 Pine Lake Road, Suite 210 | Lincoln, NE 68516  
402-488-7337 | Fax: 402-488-7338  
childrenfirstdocs.com

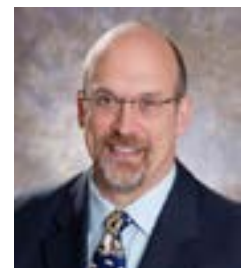
Office Hours:

Monday - Friday: 8 AM - 5 PM  
Saturday: 8 AM - 10:30 AM

Administrator: Lisa Rien (lisar@cfpne.com)



Adam Dziacky,  
MD



Robert Koch,  
MD, FAAP

# COMPLETE CHILDREN'S HEALTH, PC

8201 Northwoods Drive  
Lincoln, NE 68505

3262 Salt Creek Circle  
Lincoln, NE 68504

4020 Hohensee Drive  
Lincoln, NE 68516

1336 West A St, Suite B  
Lincoln, NE 68522

402-465-5600 | Fax: 402-327-6074  
After Hours: 402-465-5600, Option 1  
completechildrenshealth.com

Office Hours:  
Monday-Friday: 8:30 AM - 4:30 PM  
Saturday: 9 AM - 4 PM | Sunday: 10 AM - 2 PM

Administrator:  
Scott Jansen (scott.jansen@cch-neb.com)



Luke Anschutz,  
MD, FAAP



Amy Bargaen,  
MD, FAAP



Heather  
Christianson,  
MD, FAAP



Sarah French,  
MD



Sian Jones-Jobst,  
MD, FAAP



Alexandra Keating,  
MD, FAAP



Kaitlyn Lattimer,  
MD



M. Sarah Matthias,  
MD, FAAP



David Meduna,  
MD, FAAP



Sahra Niazi,  
MD, FAAP



Julie Overcash,  
MD, FAAP



Ted Pham,  
DO, FAOBP



Sonya Reynolds,  
MD, FAAP



Sue Springman,  
MD, FAAP



Kimberly White,  
MD, FAAP, MS



Pamela Zegers,  
MD, FAAP

## Pediatric Psychologists

Tiffany Brandt, PhD  
Corrie Davies, PhD  
Sarah Evans, PhD  
Lynae Frerichs, PhD  
Stacy Kosse, PhD  
Brittany Liebsack, PhD

# DOCTORS OF CHILDREN

6041 Village Drive, Suite 150 | Lincoln, NE 68516  
402-423-1900 | Fax: 402-423-5991  
doctorsofchildren.org

Office Hours:  
Monday - Friday: 8:30 AM - 5 PM | Saturday: 8:30 AM - 12 PM

Administrator: Amy Bryan (docofchildren@windstream.net)



Colleen Hanna-Slagle,  
MD



Stacey Houston,  
MD, FAAP

# LINCOLN PEDIATRIC GROUP

5625 S 62nd St, Suite 100 | Lincoln, NE 68516  
402-489-3834 | Fax: 402-489-5049  
lincolnpediatricgroup.com

Administrator:  
Matthew Huff (Mhuff@lpgmd.com)

Office Hours:  
Monday - Thursday: 8 AM - 7 PM  
Friday: 8 AM - 4:30 PM  
Saturday: 8 AM - 12 PM (sick appointments only)  
Sunday: 12:30 PM - 4:30 PM (sick appointments only)



Kay Anderson,  
MD, FAAP, IBCLC



Rachel Brewer,  
MD, FAAP



Jason Davis,  
MD, FAAP



Carrie Dell,  
MD, FAAP



Joel Greisen,  
MD, FAAP



Thomas Helms,  
DO, FAAP



Amanda Knapp,  
MD, FAAP



Shelley Nelson,  
MD, FAAP



Danielle Saner,  
DO, FAAP



Erin Schmitz,  
MD, FAAP



Michelle Wineinger,  
MD, FAAP

# PEDIATRICS, PC

7001 A Street, Suite 110 | Lincoln, NE 68510  
402-489-0800 | Fax: 402-489-6803  
pediatricspc.com

Office Hours:  
Monday - Thursday: 8 AM - 5:30 PM | Friday: 8 AM - 4:30 PM | Saturday: 8 AM - 12 PM

Administrator: Justin Hoatson (jhoatson@pediatricspc.com)



Heidi Barker,  
DO, FAAP



Katie Borcyk,  
MD, FAAP



Alicia Cruce,  
MD, FAAP



David Duensing,  
DO, FAAP



Michelle Walsh,  
MD, FAAP

# PHYSICAL AND OCCUPATIONAL THERAPY

## CANCER PARTNERS OF NEBRASKA

4101 Tiger Lily Road, Suite 100 | Lincoln, NE 68516  
402-420-7000 | Fax: 402-420-6969  
cancerpartners.com

Office Hours:  
Monday - Friday: 7 AM - 4 PM

Administrator: Justin Rousek (justinr@cancerpartners.com)



Andrea Belgum,  
MOTR/L, CLT



Tracy Bender,  
OTD, OTR/L, CLT,  
CMF



Tara Benes,  
DPT



Rebecca Evans,  
OTR/L, CLT



Taylor Homes,  
MOTR/L, CLT



Caleb Krenk,  
OTR/L, CLT

## FYZICAL THERAPY & BALANCE CENTERS

2130 S 17th Street, Suite 200  
Lincoln, NE 68502  
402-476-6575 | Fax: 402-476-6576  
fyzical.com/lincoln

770 N Cotner Blvd., Suite 125  
Lincoln, NE 68505  
402-464-6141 | Fax: 402-464-6142

Office Hours:  
Monday - Thursday: 8 AM - 6 PM  
Friday: 8 AM - 4 PM

Administrator: Kelly Bjorkman (kelly.bjorkman@fyzical.com)



Eric Bjorkman,  
PT, MPT, CO



Jordyn Brester,  
DPT



Sarah Diersen,  
PT, DPT



Sydney Green,  
PT, DPT



Carrie Rohr,  
PT, DPT, AIB-VR II,  
AIB-VRC

# LINCOLN PHYSICAL THERAPY AND SPORTS REHAB, LLC

6940 Van Dorn St  
Suite 103  
Lincoln, NE 68506  
402-483-4709  
Fax: 402-483-4097  
M - F: 8 AM - 6 PM

1501 Pine Lake Road  
Suite 20  
Lincoln, NE 68512  
402-421-2700  
Fax: 402-421-2699  
M - F: 7 AM - 6 PM

2222 S 16th  
Suite 220  
Lincoln, NE 68502  
402-441-1300  
Fax: 402-438-4230  
M- F: 8 AM - 5 PM

2550 Superior St  
Suite 100  
Lincoln, NE 68521  
402-476-2600  
Fax: 402-476-2604  
M- F: 7 AM - 6 PM

lincolnpt.com

Administrator: Deb Weber (dweber@lincolnpt.com)



Andrew Creal,  
DPT, OCS



Nathan Gurule,  
DPT



Molly Habegger,  
DPT, OCS



Rachel Heyl,  
DPT, OCS



Doug Kavanaugh  
MPT, OCS



Sarah Kimberly,  
DPT



Amber LeGrande,  
DPT



Brooklynn Method,  
DPT



Meghan Mueller,  
DPT



Alan Thompson,  
DPT, CHT



Landon Warner,  
DPT



Chad Wemhoff,  
MPT, SCS

# PRAIRIE ORTHOPAEDIC AND PLASTIC SURGERY

## South Location

4130 Pioneer Woods Drive, Suite 1  
Lincoln, NE 68506

402-489-4700 | Fax: 402-489-5220  
prairie-ortho.com

## North Location

5901 N 28th Street  
Lincoln, NE 68504

Office Hours:

Monday - Friday: 7 AM - 6 PM

Administrator: Kevin Hejtmanek (Khetjmanek@prairie-ortho.com)



Amberly Byington,  
PT, DPT, OCS, CIMT



John Chatwell,  
PT, DPT, OCS



Tanner Dewey,  
PT, DPT, OCS



Erica Heiman,  
PT, DPT, MSA, OCS,  
CHT



Jacalyn Kliewer,  
DT, DPT



Stephanie  
McClung,  
OTR/L, OTD



Julie Obear,  
PT, DPT, CHT



Carol Ortlieb,  
PT, MPT



Debra  
Rodgers-Olson,  
PT, MHS, CLWCT



Keli St. Clair,  
PT, DPT

# PROFORMANCE PHYSICAL THERAPY

4220 Lucile Drive, Suite 3 | Lincoln, NE 68506

402-327-9000 | Fax: 402-327-9003

proformancetherapy.com

Office Hours: Monday - Friday: 7 AM - 7 PM

Administrator: Kayla Hughes (info@proformancetherapy.com)



Matt Borschlegl,  
PT, MPT, CSCS



Staci Borschlegl,  
PT, MPT, DPT



Kaley Brandenburg,  
PT, DPT, MBA



Brett Freitag,  
PT, DPT, CSCS



Marshall Ozaki,  
PT, DPT, CSCS

# THE LYMPHEDEMA CLINIC

## North Lincoln

3940 Cornhusker Hwy, Suite 200  
Lincoln, NE 68504  
402-904-4474  
Fax: 402-318-3154  
M - F: 7 AM - 6 PM

## South Lincoln

4131 Pioneer Woods Dr., Suite 101  
Lincoln, NE 68506  
402-904-4474  
Fax: 402-318-3154  
M - F: 7 AM - 6 PM

## Papillion

955 N Adams Street, Suite 1  
Papillion, NE 68046-3080  
531-600-7000  
Fax: 531-200-9978  
M- F: 7 AM - 6 PM

Administrator: Jessica Wilcox ([jessicawilcox@llotnebraska.com](mailto:jessicawilcox@llotnebraska.com))



Carly Bindl,  
MOT, OTR/L



Ethan Deyhle,  
OTD, OTR/L



Hannah McCoy,  
MOT, OTR/L



Allissa Meyer,  
OTD, OTR/L



Azia Ourada,  
OTD, OTR/L



Kristyn Nakayama,  
OTD, OTR/L



Adam Rawson,  
OTD, CLT-LANA



Madeleine Sorenson,  
MOT, OTR/L



Alison Tobar,  
OTD, OTR/L

## PLASTIC, COSMETIC AND RECONSTRUCTIVE SURGERY

### JACOBSON COSMETIC SURGERY

1630 S 70th St, Suite 202 | Lincoln, NE 68506  
531-254-5458 | Fax: 531-254-5065  
[jacobsoncosmeticsurgery.com](http://jacobsoncosmeticsurgery.com)

Office Hours:

Monday - Thursday: 8:30 AM - 5 PM | Friday: 8:30 AM - 12 PM

Administrator: Dr. Jessica Jacobson ([drjess@jacobsoncosmeticsurgery.com](mailto:drjess@jacobsoncosmeticsurgery.com))



Jessica Jacobson,  
DO

## MITCHELL J. HENRY, M.D.

2222 S 16th St, Suite 300 (Tower A) | Lincoln, NE 68502  
402-435-0044 | Fax: 402-435-7010  
lincolnplasticsurgery.com

Office Hours:

Monday/Wednesday: 8 AM - 5 PM

Tuesday/Thursday: 8 AM - 4:30 PM

Friday: 8 AM - 3 PM

Administrator: Darcy Parr (darcy@drhenrys.com)



Mitchell J. Henry,  
DDS, MD

## KATNISS CLINIC

5757 S. 34th St, Suite 300 | Lincoln, NE 68516  
402-405-4942

Office Hours:

Monday - Wednesday: By appointment only

Thursday - Saturday: 8 AM - 5 PM

Administrator: Keli Kolegraff  
(office@katnissclinic.com)



Keli Kolegraff,  
MD, PhD

## PRAIRIE ORTHOPAEDIC AND PLASTIC SURGERY

### South Location

4130 Pioneer Woods Drive, Suite 1  
Lincoln, NE 68506

402-489-4700 | Fax: 402-489-5220  
prairie-ortho.com

Office Hours: Monday - Friday: 8 AM - 4:30 PM

Ortho Express Care Hours: Monday - Friday: 8 AM - 4:30 PM

Administrator: Kevin Hejtmanek (Khejtmanek@prairie-ortho.com)

### North Location

5901 N 28th Street  
Lincoln, NE 68504



Gustavo Machado,  
MD

## PRAIRIE ORTHOPAEDIC AND PLASTIC SURGERY

### South Location

4130 Pioneer Woods Drive, Suite 1  
Lincoln, NE 68506

402-489-4700 | Fax: 402-489-5220  
prairie-ortho.com

Office Hours: Monday - Friday: 8 AM - 4:30 PM  
Ortho Express Care Hours: Monday - Friday: 8 AM - 4:30 PM

Administrator: Kevin Hejtmanek (Khejtmanek@prairie-ortho.com)

### North Location

5901 N 28th Street  
Lincoln, NE 68504



Tanner Dodson,  
DPM



Kara Krejci-Reed,  
DPM



Katherine Ternent,  
DPM

## a1 FAMILY PSYCHIATRY

418 The Apothecary | 140 North 8th St | Lincoln, NE 68508  
402-817-5813

Office Hours:  
Monday - Friday: 9 AM - 5 PM

Administrator: Molly Underwood Niazi (molly@a1familypsychiatry.com)



Ismatt Niazi,  
MD

# PULMONARY/SLEEP MEDICINE

## NEBRASKA PULMONARY SPECIALTIES

### Lincoln Location

1500 S 48th St, Suite 800

Lincoln, NE 68506

Office Hours: Monday - Thursday: 8 AM - 5 PM

Friday: 8 AM - 2 PM

402-483-8600 | Fax: 402-483-8689

nepulmonaryspecialties.com

### Omaha Location

16909 Lakeside Hills Court, Suite 410

Omaha, NE 68130

Office Hours: Monday - Thursday: 8 AM - 5 PM

Friday: 8 AM - 2 PM

Administrator:

Abbie Fougeron (afougeron@npsllc.org)



Sean Barry,  
MD



Douglas Fiedler,  
MD, FCCP



Harvey Hopkins,  
MD, FCCP



Jeffrey Jarrett,  
MD



William Johnson,  
MD, FCCP



Ryan Martin,  
MD, FCCP



Matt Maslonka,  
MD, FCCP



Radu Neamu,  
MD, FCCP



Ali Piper,  
MD



Kevin Reichmuth,  
MD, FCCP



Jake Riggle,  
MD, PhD



Jonathan Spencer,  
MD, FCCP



John Trapp,  
MD, FCCP



Louis Violi,  
MD, FCCP



Ben Wiese,  
MD

# RADIATION ONCOLOGY

## CANCER PARTNERS OF NEBRASKA

4101 Tiger Lily Road, Suite 100 | Lincoln, NE 68516  
402-420-7000 | Fax: 402-420-6969  
cancerpartners.com

Office Hours:  
Monday - Thursday: 8 AM - 5 PM  
Friday: 8 AM - 4 PM

Administrator:  
Justin Rousek (justinr@cancerpartners.com)



Justin Burr,  
MD



Joseph Kam Chiu,  
MD



Jacqueline Kelly,  
MD



Mark Stavas,  
MD

## NEBRASKA HEMATOLOGY-ONCOLOGY

### South Location

8001 Eiger Drive  
Lincoln, NE 68516

### North Location

3240 Folkways Blvd  
Lincoln, NE 68504

### Beatrice Location

522 Sargent Street  
Beatrice, NE 68310

402-484-4900 | Fax: 402-484-6456  
yourcancercare.com

Office Hours:  
Monday - Friday: 8 AM - 5 PM

Administrator: Lisa Jansen (ljansen@yourcancercare.com)



Kevin Yee,  
MD

# RADIOLOGY

## ADVANCED MEDICAL IMAGING

7601 Pioneers Blvd. | Lincoln, NE 68506

402-484-6677 | Fax: 402-484-6688

amimaging.com

Office Hours:

Monday - Friday: 6:30 AM - 8:30 PM |

Saturday - Sunday: 8 AM - 6 PM

Administrator:

Georgia Blobaum (blobaum@amimaging.com)



Jeffrey Ailes,  
MD



Curtis Burhoop,  
MD



Kenneth Burton,  
MD



Christopher Colling,  
MD



Gisele Cruz,  
MD



Mary Curtis,  
MD



Michael DeWald,  
MD



Clark Diffendaffer,  
MD



Jonathan Felt,  
MD



Daniel Finn,  
MD



Kevin Gillespie,  
MD



Daniel Hadland,  
MD



William Ingham,  
MD



Quinton S. Kelly,  
MD, RPVI



David Kiple,  
MD



Evan Lange,  
MD



William Ludwig,  
MD



Minh Luu,  
MD



Sandra Machado,  
MD



Lee Marshall,  
MD



Ayodale Odulate,  
MD



Benjamin Owen,  
MD



Rahul Razdan,  
MD, FSIR



Sukhjinder Singh,  
MD



Meagan Uzee,  
MD



Eric Vander Woude,  
MD, RPVI, DABVLM



Charles Viers,  
MD

## ARTHRITIS CENTER OF NEBRASKA

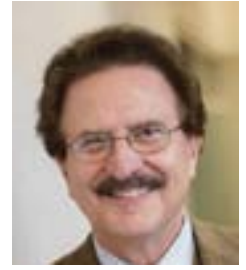
3901 Pine Lake Road, Suite 120 | Lincoln, NE 68516  
402-420-1212 | 855-882-5310 | Fax: 402-328-0961  
nebraskaarthritis.com

Office Hours:  
Monday - Thursday: 7 AM - 4:30 PM  
Friday: 7 AM - 3 PM

Administrator:  
Jill Gansemer (jill.gansemer@nebraskaarthritis.com)



Dr. Mashood  
Badshah,  
MD



Melvin Churchill,  
MD

## RHEUMATOLOGY AND OSTEOPOROSIS SERVICES

7441 O Street, Suite 400 | Lincoln, NE 68510  
402-464-9000 | Fax: 402-464-4447  
rheumatologyandosteoporosis.com

Office Hours:  
Monday - Thursday: 8 AM - 4 PM  
Friday: 8 AM - 12 PM

Administrator:  
Ginger Johnson (ginger@rheumatologyandosteoporosis.com)



Jennifer Elliott,  
MD



Amy Garwood,  
MD

## URGENT CARE

### URGENT CARE CLINIC OF LINCOLN

4210 Pioneer Woods Drive, Suite A | Lincoln, NE 68506  
402-488-4321 | Fax: 402-488-4355  
ucclincoln.com

Office Hours: Monday - Friday: 8 AM - 8 PM  
Saturday and Sunday: 9 AM - 5 PM

Administrator:  
Bridget Green (bgreen@ucclincoln.com)



Donald Rice,  
MD, FAFAP

# UROLOGY

## NEBRASKA UROLOGY

5500 Pine Lake Road | Lincoln, NE 68516  
402-489-8888 | Fax: 402-421-1945  
ne-urology.com

Office Hours:  
Monday - Thursday: 8 AM - 5 PM  
Friday: 8 AM - 4 PM

Administrator:  
Jenna Stratman (jennas@ne-urology.com)



Tom Brush,  
MD



Jonathan Henning,  
MD



Brandon Henslee,  
MD



Tara Kirkpatrick,  
MD



Andrew Lepinski,  
MD



Logan McGuffey,  
MD



A.J. Pomajzl,  
MD



Lance Wiebusch,  
MD



David Wiltfong,  
MD

# AUBURN

## AUBURN FAMILY HEALTH CENTER

2115 14th Street, Suite 100 | Auburn, NE 68305  
402-274-4993 | Fax: 402-472-4905  
auburnfamilyhealthcenter.com

Office Hours:  
Monday - Friday: 7 AM - 5 PM

Administrator: Kristi Pelican (kpelican@afhcpc.com)



Amanda Ensz,  
MD



Andrew Ensz,  
MD



Gary Ensz,  
MD



John Gill,  
MD



Madhav Narayan,  
MD



Michael Zaruba,  
MD, FAAFP

# HOMETOWN BEHAVIORAL HEALTH

2115 14th Street, Suite 100 | Auburn, NE 68305  
402-274-4993 | Fax: 402-274-4905  
hometownbh.com

Office Hours:  
Tuesdays, Wednesdays, Thursdays (by appointment)

Administrator: Ana Damme (hbh@hometownbh.com)



Ana Damme,  
PhD, LP, BCBA

## BELLEVUE

### BELLEVUE PHYSICAL THERAPY

#### Bellevue Location

2403 Towne Centre Drive, Suite 300  
Bellevue, NE 68123  
402-292-4000 | Fax: 402-292-4001

bellevuephysicaltherapy.org

Office Hours:  
Monday - Friday: 6 AM - 6 PM

Administrator: Cara Phelps (bptclinic@hotmail.com)

#### Papillion Location

1413 S Washington Street, Suite 302  
Papillion, NE 68046  
402-979-7779 | Fax: 402-979-7930



Danny Beckstead,  
PT, DPT



Alysa Biggs,  
PT, DPT



Sydney Buresh,  
PT, DPT



Cody Konopasek,  
PT, DPT



Christina Sullivan,  
PT, DPT



Kirsten Wagner,  
PT, DPT

# INNOVATE PHYSICAL THERAPY

## Bellevue

1804 Hillcrest Drive | Bellevue, NE 68005  
402-682-4210 | Fax: 402-682-4256

## Innovate @ Home

Omaha/Lincoln  
402-682-6999 | Fax: 402-682-4854

innovate-pt.com

Office Hours: Monday - Friday: 7 AM - 6 PM

Administrator: Matt Oestmann (moestmann@hillcresthealth.com)

Stephanie  
Becklun,  
OT

Ashley  
Belt,  
PT

Sarah  
Blomenkamp,  
PT, DPT

Jennifer  
Bruursema,  
PT

Brenda  
Cogswell,  
SLP

Kenyon  
DeHaan,  
PT

Amber  
Detter,  
SLP

Kathryn  
Dimmitt,  
PT

Douglas  
Fox,  
OT

Ann  
Hazuka,  
OT

Ethan  
Hunke,  
PT

Jenifer  
Johnson,  
PT

Rebecca  
Kipp,  
OT

Wyatt  
Kipp,  
PT

Alicia  
Kohles,  
PT

Raegan  
Muller,  
PT

Stacie  
Nieveen,  
OT

Janelle  
Pecha,  
OT

Kathy  
Ramaekers,  
PT

Nicole  
Stamm,  
PT

## COLUMBUS FAMILY PRACTICE ASSOCIATES, PC

4214 38th St. | Columbus, NE 68601  
402-564-1338 | Fax: 402-564-8902  
columbusfamilypractice.com

Office Hours:

Monday - Friday: 8 AM - 5 PM

Saturday: 8 AM - 12 PM

Administrator: Jennifer Jarecki (jjarecki@colfamprac.com)



Kipton Anderson,  
MD



Joseph Citta,  
MD



Megan Faltys,  
MD



Marie Rodehorst,  
MD



Michelle Sell,  
MD



Dale Zaruba,  
MD

## COLUMBUS MEDICAL CENTER

1454 28th Avenue | Columbus, NE 68601  
402-564-2816 | Fax: 402-564-1312  
columbusmedicalcenter.com

Office Hours:

Monday - Friday: 8 AM - 5 PM

Administrator: Nicole Pollema (npollema@columbusmedicalcenter.com)



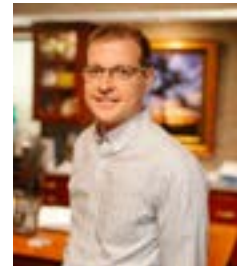
Edward Discoe,  
MD



Jeffrey Gotschall,  
MD



Luke Lemke,  
MD



Craig Pekny,  
MD

# CRETE

## SALINE MEDICAL SPECIALTIES

830 E 1st Street, Suite 200 | Crete, NE 68333  
402-826-3222 | Fax: 402-826-3228  
smscrete.com

Office Hours: Monday and Wednesday: 8 AM - 7 PM  
Tuesday, Thursday, Friday: 8 AM - 5 PM  
Saturday: 9 AM - 12 PM

Administrator: Kate West (kwest@smscrete.com)



Josue Gutierrez,  
MD

# DAVID CITY

## BUTLER COUNTY CLINIC, PC

336 South 9th Street | David City, NE 68632  
402-367-3193 | Fax: 402-367-3261  
butlercountyclinic.com

Office Hours:  
Monday, Wednesday, Friday: 8 AM - 5 PM  
Tuesday and Thursday: 8:30 AM - 5 PM  
Saturday: 8 AM - 11 AM

Administrator:  
Robert Messbarger (rmessbarger@butlercountyclinic.com)



Sidra Akhter,  
MD



Mark Carlson,  
MD



Robert Daro,  
MD



Matthew Summers,  
MD



Joshua Sypal,  
MD

# FREMONT

## FREMONT NEUROLOGY SPECIALISTS

2735 N Clarkson Street | Fremont, NE 68502  
402-727-9992 | Fax: 402-727-7029

Office Hours:  
Monday - Thursday: 8:30 AM - 5 PM

Administrator: Tasha Fangmeyer (tfang@fns-clarkson.com)



John Puente,  
MD

## CENTRAL NEBRASKA ORTHOPEDICS

620 N Diers Ave, Suite 200 | Grand Island, NE 68803  
308-384-5400 | Fax: 308-384-5201  
cnorthopedics.com

Office Hours: Monday - Friday: 8 AM - 5 PM

Administrator: Tim Klemme (tim@cnorthopedics.com)



Jake Bianco,  
MD



Philip Cahoy,  
MD



Derek Hayden,  
DO



Scott Lemek,  
MD



Scott Lukens,  
MD



Greg Sextro,  
MD



Seth Wardyn,  
MD



Tyler White,  
MD

## FAMILY PRACTICE OF GRAND ISLAND, PC

3563 Prairievew St, Suite 300 | Grand Island, NE 68803  
308-381-0162 | Fax: 308-389-4445  
familypracticegi.com

Office Hours: Monday - Friday: 8 AM - 5 PM

Administrator: Whitney Miller (wmiller@familypracticegi.com)



Richard Frueling,  
MD



Sara Graybill,  
MD



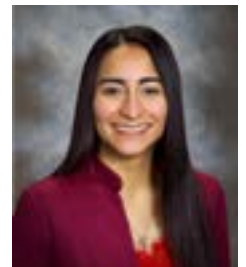
Steven Husen,  
MD



Zachary Meyer,  
MD



Andrew Pohlmeier,  
MD



Maria Rojas-Bita,  
MD



Rebecca Steinke,  
MD



Krista Stoecker,  
MD



Kenneth Vettel,  
MD



Tyler Vettel,  
MD



Chad Vieth,  
MD



Thomas  
Vonderfecht,  
MD

# GRAND ISLAND CLINIC

2444 West Faidley Avenue | Grand Island, NE 68803  
308-382-1100 | Fax: 308-385-0798  
grandislandclinic.net

Office Hours: Monday - Friday: 8:30 AM - 5:30 PM

Immediate Care: Monday - Thursday: 8 AM - 6 PM | Saturday: 8:30 AM - 12 PM

Administrator: Joe Armatys (jarmatys@grandislandclinic.net)

## PEDIATRICS



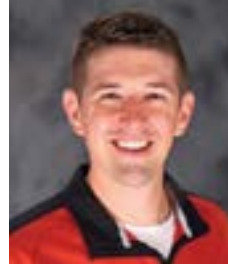
Douglas Boon,  
MD, FAAP



Morgan Carson,  
MD



Timothy Gardner,  
MD, FAAP



Joseph Law IV,  
MD, FAAP



Melissa Law,  
MD, FAAP

## FAMILY PRACTICE



Adam Brosz,  
MD



Douglas Herbek,  
MD



Lindsey  
Mettenbrink,  
DO



Alberto Solache,  
MD

## OB/GYN



Matthew Brennan,  
MD, FACOG



Libby Crockett,  
MD, MPH, FACOG



Erica Haake,  
MD, FACOG



Molly Johnson,  
MD, FACOG



Kathryn Kenna,  
MD, FACOG



Kirstin Sholes,  
MD, FACOG

## OPPORTUNE ACRES

1805 E 26 Rd | Marquette, NE 68854  
402-984-6256 | Fax: 402-275-5515  
opportune-acres.webador.com

Office Hours:

Monday - Friday: 9 AM - 6 PM

Administrator: Kari Valentine (kari.opportuneacres@gmail.com)



Kari Valentine,  
OTR/L, ATP

## HASTINGS

### FAMILY MEDICAL CENTER OF HASTINGS

1021 W 14th St. PO Box 968 | Hastings, NE 68902  
402-462-8456 | Fax: 402-463-9698

fmchastings.com

Office Hours:

Monday - Friday: 8 AM - 5 PM

Administrator:

Gerry Theisen (gtheisen@fmchastings.com)



Mackenzie Hemje,  
MD



Megan  
Hunke-Lomax,  
MD



Logan Pritchard,  
DO



Curtis Reimer,  
MD



David Schram,  
MD



Timothy  
Zimmerman,  
MD

## HASTINGS INTERNAL MEDICINE ASSOCIATES, PC

2115 N Kansas Ave, Suite 105 | Hastings, NE 68901

402-463-2454 | Fax: 402-463-2450

hastingsinternalmed.com Office Hours: Monday - Friday: 8 AM - 4 PM

Administrator: Jodi Shuck (jshuck@hastingsinternalmed.com)



Douglas Hentzen,  
MD



Michelle Seizys,  
MD



Justin Wenburg,  
MD



Paul Wibbels,  
MD

## INTEGRATED PEDIATRICS, P.C.

2207 Osborne Dr W, Suite 100 | Hastings, NE 68901

402-834-2438 | Fax: 402-834-2238

integratedpediatricspc.com

Office Hours:

Monday - Thursday: 8 AM - 5 PM

Friday: 8 AM - 4 PM

Administrator:

Ryan Ratigan (ryan@integratedpediatricspc.com)



Janet Howe,  
MD



Kristen Johnson,  
MD



Noelle  
Sherrets-Ratigan,  
DO

## MIDWEST EAR, NOSE AND THROAT SPECIALISTS

2115 N Kansas Ave, Suite 203 | Hastings, NE 68901

402-463-2431

midwestent.net

Office Hours:

Monday - Friday: 9 AM - 5 PM

Administrator: David Long (dlong@midwestent.us)



Mark Keller,  
MD

## NEBRASKA RURAL SURGICAL ASSOCIATES, LLC

618 N Denver Ave. | Hastings, NE 68901

402-834-2450 | Fax: 402-834-2449

neruralsurgery.com

Office Hours:

Monday - Friday: 8 AM - 5 PM

Administrator: Heidi Weidner (neruralsurgery@gmail.com)



Jared Dietze,  
MD, FACS



Caleb Schroeder,  
MD, FACS

# PLATTE RIVER FOOT AND ANKLE SURGEONS

## Hastings

306 W 2nd St  
Hastings, NE  
68901

## Grand Island

908 N Howard  
Ave, Suite 103  
Grand Island,  
NE 68803

## Gretna

720 Hwy 6  
Gretna, NE  
68028

## Omaha

11334 Elm St  
Omaha, NE  
68144-4733

## Lincoln

2710 South St.  
Lincoln, NE  
68502

## Norfolk

3901 W Norfolk  
Ave, Suite S,  
Norfolk, NE  
68701

402-751-0600 | Fax: 402-751-0800  
prfootandankle.com

Office Hours:

Monday - Friday: 9 AM - 5 PM

Administrator: Valerie Waters (valeriew@prfootandankle.com)



Marcell Brikho,  
DPM



Evan J. Lenertz,  
DPM



Devin Munk,  
DPM



David E. Waters,  
DPM



Brady Webb,  
DPM

## HOLDREGE

# FAMILY MEDICAL SPECIALTIES OF HOLDREGE

516 W 14th Ave, Suite 100 | Holdrege, NE 68949  
308-995-4431 | Fax: 308-995-2148  
fammedspec.com

Office Hours: Monday - Friday: 8 AM - 5 PM | Saturday: 8 AM - 11:30 AM

Administrator: Glynnna McKenzie (gmckenzie@fammedspec.com)



Kevin Amthor,  
MD



Jeffrey Berney,  
MD



Scott Ehresman,  
MD



Shane Smith,  
MD



Kathryn Thelen,  
DO

# KEARNEY

## CANCER PARTNERS OF NEBRASKA

909 22nd Avenue | Kearney, NE 68845  
308-296-5000 | Fax:  
cancerpartners.com

Office Hours:  
Monday - Thursday: 8 AM - 5 PM  
Friday: 8:00 AM - 4 PM

Administrator: Justin Rousek (justinr@cancerpartners.com)



Justin Burr,  
MD



Swetha Yadav,  
MD

## FAMILY PRACTICE ASSOCIATES, PC

620 E 25th Street, Suite 5 | Kearney, NE 68847  
308-865-2767 | Fax: 308-865-2765  
kearneyfpa.com

Office Hours:  
Monday - Friday: 8 AM - 4 PM  
Saturday: 8:30 AM - 12 PM

Administrator: Laura Meyers (lmeyers@kearneyfpa.com)



Kassandra Davis,  
MD



Jessica Hatch,  
MD



Amy Herbig,  
MD



Robert Messbarger,  
MD



Kyle Myers,  
MD



Jami Pritschau,  
MD



Abby Richardson,  
MD

## REGENIREX, LLC

5205 2nd Ave, Suite 1 | Kearney, NE 68847  
308-237-9696 | Fax: 844-217-7989  
regenirex.org

Office Hours:  
Monday - Friday: 8 AM - 5 PM

Administrator:  
Laurel Seevers (lseevers@regenirex.org)



Burt McKeag,  
MD



Pam McKeag,  
MD

## PLUM CREEK FAMILY MEDICAL GROUP PC

1103 Buffalo Bend | Lexington, NE 68850  
308-324-6386 Ext. 637 | Fax: 308-324-4026  
plumcreekmedicalgroup.com

Office Hours:  
Monday - Friday: 8 AM - 4:30 PM

Administrator:  
Avis Dillard (avid@dpcmed.biz)



Edward Ford,  
MD



John Ford,  
MD

## NORTH PLATTE

### COMPREHENSIVE PAIN & INFUSION CENTER, LLC

South Cottonwood Plaza  
600 E Francis, Suite 2 & 3 | North Platte, NE 69101  
308-252-1447 | Fax: 308-252-1201

Administrator:  
Imanual Somers-Dehaney, MD (aleemannie@gmail.com)



Aleeta Somers-Dehaney,  
MD

### MIDLANDS FAMILY MEDICINE LLP

600 E Francis, Suite 2 & 3 | North Platte, NE 69101  
308-252-1447 | Fax: 308-252-1201  
midlandsfamilymed.com

Office Hours:  
Monday & Thursday: 3 PM - 8 PM  
Tuesday, Wednesday & Friday: 8 AM - 5 PM  
Administrator: Jordan Barta (bartaj@gphealth.org)



Hunter Allen,  
MD



Ronald Asher,  
MD



Jason Citta,  
MD



Jesse Dunn,  
MD



Tyler Felton,  
MD



Shawn Murdock,  
MD



Michael Nelson,  
MD

# AMBULATORY SURGERY CENTERS

## ADVANCED MEDICAL IMAGING SURGERY CENTER

7555 Pioneers Blvd. | Lincoln, NE 68506  
402-261-1085  
amimaging.com/surgery-center

Office Hours:  
Monday - Friday: 7 AM - 5 PM

Administrator:  
Georgia Blobaum (blobaum@amimaging.com)



## LINCOLN ENDOSCOPY CENTER

4545 R Street, Suite 101 | Lincoln, NE 68503  
402-465-4545  
gidocs.net/endoscopy-center/

Office Hours:  
Monday - Friday: 6:45 AM - 4:30 PM

Administrator:  
Nate Kreifels (nkreifels@gidocs.net)



## NEBRASKA SURGERY CENTER

1730 S. 70th Street, Entrance D | Lincoln, NE 68506  
402-484-6600  
nebraskasurgery.com

Office Hours:  
Monday - Friday: 6 AM - 5:30 PM

Administrator:  
Jane Haire (jhaire@nebraskasurgery.com)



## NOC SURGERY CENTER

6900 A Street | Lincoln, NE 68510  
402-436-2000 | Fax: 402-434-2690  
nebraskaortho.com

Office Hours:  
Monday - Friday: 8 AM - 5 PM

Chief Executive Officer:  
Suzi Gausman (sgausman@nebraskaortho.com)



## **NPI SURGERY CENTER**

7350 Willowbrook Lane, Suite 100 | Lincoln, NE 68516  
531-249-5353  
npisurgery.com

Office Hours:  
Monday - Friday: 8 AM - 4:30 PM

Administrator:  
Rebecca Lieser (rebecca@npisurgery.com)



## **PHYSICIANS' SURGICAL CENTER**

1500 S 48th St, Suite 201 | Lincoln, NE 68506  
402-488-5812  
entspecialties.com/ent-services/physicians'-surgical-center

Office Hours:  
Monday - Thursdays: 7 AM - 4 PM  
Friday: 7 AM - 1 PM

Administrator:  
Augusta Tanner (atanner@entspecialties.com)



## **PRAIRIE ORTHOPAEDIC & PLASTIC SURGERY**

4130 Pioneer Woods Drive, Suite 1 | Lincoln, NE 68506  
402-489-4700  
prairie-ortho.com

Office Hours:  
Monday and Wednesday: 12 PM - 6 PM

Administrator:  
Jill Hurlbut (jhurlbut@prairie-ortho.com)



## **STONE RIDGE SURGERY CENTER**

920 E 56th Street, Suite D | Kearney, NE 68847  
308-455-3091 | Fax: 308-455-3093

Office Hours:  
Monday - Friday: 8 AM - 5 PM

Administrator:  
Garrett Vetter (garrett@kearneyasc.com)



## THE NEBRASKA AMBULATORY SURGICAL CENTER

5620 S 27th Street, Suite 200 | Lincoln, NE 68512  
531-249-5030 | Fax: 531-249-5040  
nebraska-asc.com

Office Hours:  
Monday - Friday: 7 AM - 5 PM

Administrator:  
Carla Lauenstein (clauenstein@nebraska-asc.com)



## UROLOGY SURGICAL CENTER

5500 Pine Lake Road | Lincoln, NE 68516  
402-489-8888  
ne-urology.com

Office Hours:  
Monday - Friday: 7 AM - 4 PM

Administrator:  
Jenna Stratman (jennas@ne-urology.com)



## SPECIALTY HOSPITAL

### LINCOLN SURGICAL HOSPITAL

1710 S 70th St., Entrance C | Lincoln, NE 68506  
402-484-9090  
lincolnsurgery.com

Office Hours:  
Monday - Friday: 7 AM - 5 PM

Administrator:  
Robb Linafelter (rlinafelter@lincolnsurgery.com)



# PREFERRED VENDORS

## Billing and Coding

### *ruralMED Revenue Cycle Resources*

- Revenue Cycle Training Academy
- Work one-on-one with an expert
- Industry-specific expertise
- 10% discount on all services for OneHealth Members

## Collections and Accounts Receivable Management

### *AAA Collections*

- Midwestern based since 1965
- 20% collection fee on non-legal and legal recoveries
- Optional pre-collections program \$3.00 per account
- Association share-back incentive
- Full service, including in-house legal team
- Strong focus in healthcare collections

### *Professional Choice Recovery*

- Women owned
- Lincoln based
- Client-centered and team-oriented approach

## Compliance and Credentialing

### *MedTrainer*

- New hire background checks
- OneHealth pricing: \$12 per employee, per month
- Full access to MT learning and MT compliance
- Monthly minimum \$100 per clinic

## Credit Card Processing

### *CHIPD Payment Processing*

- Platform interacts with multiple EMR's
- 24/7 customer support
- Negotiated member only rates
- Local customer support
- Online, recurring, and in-person payments

## Employee Assistance Program

### *Directions EAP*

- Face to face consulting
- 24/7 on call coverage
- Credentialed, experienced counselors

## Group Purchasing Organization (GPO)

### *Prairie Health Ventures*

- Access to national and local GPO contracts
- Discounted prices on pharmacy products and services
- Local account representative available

### *Premier, Inc.*

- Maximizes value-based care
- Discounted prices on pharmacy products and services

## Healthcare Consulting

### *Atlas & Perpetua - Shawntea Gordon*

- Helps clinics with strategy, innovation and transformation necessary to achieve goals
- Guides organizations towards operational efficiency and financial success

## Information Technology

### *Applied Connective Technologies*

- 5% Pricing discount
- One-Stop-Shop for all technology needs
- Customer-First Partnership

### *DataVizion*

- Largest, independently-owned technology solutions provider in Nebraska
- 24/7/365 Comprehensive IT support
- Leveraging technology to drive innovation, increase efficiency and improve patient outcomes
- Three-year technology plan

### *Five Nines*

- \$2/ User fee per month for email encryption
- 12% Pricing discount
- 24/7/365 Support

## **Lab Services**

### *Physician Laboratory Services*

- Cost-effective testing
- Extensive clinical and anatomic test menu

## **Linens and Custodial**

### *Jackson Services*

- Uniform rental and cleaning  
medical scrubs & warm-up coats
- Many delivery frequency options are available
- All types of healthcare and medical toweling
- Healthcare and hospitality linen
- Entryway mats
- Logo mats
- Nebraska based & family owned

## **Marketing Services**

### *True North Technologies*

- Customized digital assessment with complimentary marketing plan
- \$500 project credit
- Full-service digital marketing agency

## **Medical Waste Disposal**

### *Medi-Waste Disposal*

- Flexible pickup schedules
- Pharma disposal
- Compliance online training

## **Mortgage Program**

### *UBT Physician Mortgage Program*

- Home financing for physicians just finishing college and residency
- Offers competitive 6- or 7-year fixed rates
- Wealth management services
- Premier checking account

## **Office Repairs and Restoration**

### *Fibrenew*

- On-site services
- FREE estimates
- Anti-microbacterial repairs

## **Office Solutions**

### *Eakes Office Solutions*

- Competitive pricing and discounts
- 4-Hour or less response time on a down unit
- Free product delivery

## **Patient Communication Services**

### *Professional Office Services*

- Patient payment services
- Letterhead, business cards, envelopes
- Digital messaging

## **Payroll, HR and Tax Services**

### *ADP*

- Payroll and tax compliance
- HR management
- Workforce analytics
- Compliance solutions

## **Revenue Cycle Optimization**

### *Rivet Health*

- Healthcare A/R acceleration platform
- Payer Performance: Centralized fee schedules/underpayments/negotiation
- Patient Pricing: Good faith estimate generator
- Claims Resolution: Customized denial work lists

### *ruralMED Revenue Cycle Resources*

- Revenue Cycle Training Academy
- Work one-on-one with an expert
- Industry-specific expertise
- 10% discount on all services for OneHealth Members

a1 Family Psychiatry . . . . .	47	Gynecology & Fertility PC . . . . .	30
Advanced Medical Imaging . . . . .	13, 27,36,50	Hastings Internal Medicine Associates . . . . .	60
Advanced Medical Imaging Surgery Center . . . . .	64	Heibel Dermatology Clinic, LLC . . . . .	15
Allergy, Asthma and Immunology . . . . .	9	Henry Oral & Maxillofacial Surgery . . . . .	32
Arthritis Center of Nebraska . . . . .	51	Holy Family Medical Associates . . . . .	18
Auburn Family Health Center . . . . .	52	Hometown Behavioral Health . . . . .	53
Behavioral Pediatric & Family Therapy Program, LLC . . . . .	11	Innovate Physical Therapy . . . . .	54
Bellevue Physical Therapy . . . . .	53	Innovative Pain & Spine Specialists . . . . .	36
Bluestem Health . . . . .	11,16,39	Integrated Pediatrics, P.C. . . . .	60
Butler County Clinic . . . . .	56	Jacobson Cosmetic Surgery . . . . .	45
Cancer Partners of Nebraska . . . . .	24,25,37,42,49,62	Katniss Clinic . . . . .	46
Capital Medical Clinic . . . . .	16	Lancaster Family Medicine . . . . .	18
Central Nebraska Orthopedics . . . . .	57	Lincoln Family Medical Group, PC . . . . .	12, 19
Children First Pediatrics, PC . . . . .	39	Lincoln Family Medicine Center . . . . .	19,20
Coddington Medical Family Practice . . . . .	17	Lincoln Family Wellness, PC . . . . .	21
Columbus Family Practice Associates PC . . . . .	55	Lincoln Internal Medicine Associates . . . . .	26
Columbus Medical Center . . . . .	55	Lincoln Nephrology and Hypertension . . . . .	28
Complete Children’s Health, PC . . . . .	40	Lincoln OB/GYN . . . . .	30
Complete Family Dermatology . . . . .	14	Lincoln Pediatric Group . . . . .	27,41
Comprehensive Pain & Infusion Center, LLC . . . . .	63	Lincoln Physical Therapy and Sports Rehab, LLC . . . . .	43
Consultants in Gastroenterology . . . . .	22	Lincoln Surgical Group PC . . . . .	23
Consultants in Infectious Disease . . . . .	26	Lincoln Surgical Hospital . . . . .	66
Dermatology Associates of Lincoln, LLC . . . . .	14	Midlands Family Medicine LLP . . . . .	63
Doctors of Children . . . . .	40	MidWest Behavioral Health . . . . .	12
Ear, Nose and Throat Specialties . . . . .	35	Midwest Ear, Nose and Throat Specialists . . . . .	60
East Lincoln Family Health Professionals, PC . . . . .	17	Mitchell J. Henry, MD . . . . .	46
Edgewood Family Physicians, PC . . . . .	17	Nebraska Hematology-Oncology . . . . .	25,37,49
Eye Surgical Associates   Sutton Linder & Sutton . . . . .	32	Nebraska Orthopaedic Center, PC . . . . .	33,34,35
Fallbrook Family Health Center . . . . .	17	Nebraska Pain Institute . . . . .	36
Family Health and Wellness Center . . . . .	10, 18	Nebraska Pulmonary Specialties . . . . .	48
Family Medical Center of Hastings . . . . .	59	Nebraska Rural Surgical Associates, LLC . . . . .	60
Family Medical Specialties of Holdrege . . . . .	61	Nebraska Surgery Center . . . . .	64
Family Physicians Group . . . . .	18	Nebraska Urology . . . . .	52
Family Practice Associates, PC . . . . .	62	Nebraska Weight & Wellness . . . . .	10
Family Practice of Grand Island . . . . .	57	Neurological & Spinal Surgery . . . . .	29
Fremont Neurology Specialists . . . . .	56	New Life Clinic . . . . .	21,31
FYZICAL Therapy & Balance Centers . . . . .	42	NOC Surgery Center . . . . .	64
Gastroenterology Specialties and Lincoln Endoscopy Center . . . . .	22, 64	NPI Surgery Center . . . . .	65
General Surgery Associates . . . . .	23	Opportune Acres . . . . .	59
Grand Island Clinic . . . . .	58	Pathology Medical Services, PC . . . . .	38
		Pathology Services, PC . . . . .	38

Pediatrics, PC	41	Solace Behavioral Health & Wellness	12
Physicians Laboratory Services	39	Star Anesthesia	9
Physicians' Surgical Center	65	Stone Ridge Surgery Center	65
Pioneer Heart Institute	13	Surgical Associates	10, 13, 14, 24
Platte River Foot and Ankle Surgeons	61	Sutton Dermatology + Aesthetics	15
Plum Creek Medical Group PC	63	The Lymphedema Clinic	45
Prairie Orthopaedic and Plastic Surgery	34, 44, 46, 47, 65	The Nebraska Ambulatory Surgical Center	66
Primary Care Partners	21	The Nebraska Neurosurgery Group, LLC	29
Proformance Physical Therapy	44	Urgent Care Clinic of Lincoln	51
Regenirex, LLC	62	Urology Surgical Center	66
Rheumatology and Osteoporosis Services	51	Women's Health Care Center of Williamsburg	31
Saline Medical Specialties	56		

## PROVIDER LISTING

<b>A</b>			
Aaronson, Michael	28	Belt, Ashley	54
Ailes, Jeffry	50	Bender, Tracy	42
Akhter, Sidra	56	Benes, Tara	42
Allard, Corey	38	Berg, Jenna	35
Allen, Hunter	63	Berg, Jeremy	39
Amthor, Kevin	61	Berney, Jeffrey	61
Anderson, Kay	27, 41	Bianco, Jake	57
Anderson, Kipton	55	Biehl, Ben	21
Anderson, Rachel	31	Biggs, Alysa	53
Andrews, Trey	11	Bindl, Carly	45
Anschutz, Luke	40	Bixenmann, Benjamin	29
Antonson, Clark	22	Bjorkman, Eric	42
Argo, Colby	32	Blake, Rachel	7, 8, 21
Arukala, Yamini	20	Blomenberg, Luke	20
Asher, Ronald	63	Blomenkamp, Sarah	54
Avery, Eric	7, 25	Bokemper, Michael	34
Ayala, Kaliprasad	13	Boon, Douglas	58
<b>B</b>		Borcyk, Katie	41
Badshah, Mashood	51	Bornschlegl, Matt	44
Bajwa, Harpaul	13	Bornschlegl, Staci	44
Bargen, Amy	40	Bossard, Luke	11
Barker, Heidi	41	Bott, Aaron	33
Barksdale, Byron	38	Bowen, Casey	14
Barry, Sean	48	Bowen, Rebecca	35
Basler, Geoffrey	14	Bowen, Robert	39
Becklun, Stephanie	54	Bowman, Erik	22
Beckstead, Danny	53	Brandenburg, Kaley	44
Belgum, Andrea	42	Brandt, Tiffany	40
Belleville, Matthew	20	Breit, Hale	20
		Brennan, Matthew	58
		Brester, Jordyn	42
		Brewer, Rachel	41
		Brikho, Marcell	61
		Brinkhoff, April	17
		Brock, Rachel	28
		Brosz, Adam	58
		Brown Dwight	12
		Brush, Tom	52
		Bruursema, Jennifer	54
		Buresh, Sydney	53
		Burhoop, Curtis	50
		Burr, Justin	49, 62
		Burton, Kenneth	50
		Buttolph, Thomas	38
		Byington, Amberly	44
		Byington, Matthew	34
		<b>C</b>	
		Cada, Sarah	30
		Cahoy, Philip	57
		Carlson, Tyson	17
		Carlson, Mark	56
		Carraher, James	21
		Carson, Joslin	39
		Carson, Morgan	58
		Carthel, Elizabeth	28
		Cary, Paulette	11
		Cederberg, Christopher	7, 35
		Cerny, Sabrina	19
		Chatwell, John	44
		Chatwell, Kristina	12
		Chau, Bich	16

Cheloha, Kenneth. . . . .	26	Dodson, Tanner. . . . .	47	<b>G</b>	
Chiu, Joseph Kam . . . . .	49	Dorhout, Anna. . . . .	20	Gallentine, James. . . . .	33
Christianson, Heather . . . . .	40	Duensing, David . . . . .	41	Gardner, Timothy. . . . .	58
Chruscicki, Daniel . . . . .	32	Duffek, Renee. . . . .	12	Garwood, Amy. . . . .	51
Churchill, Melvin. . . . .	51	Dunder, Steven . . . . .	25	Gawel, Stephanie. . . . .	28
Citta, Jason . . . . .	63	Dunn, Jesse . . . . .	63	Gill, John. . . . .	52
Citta, Joseph. . . . .	55	Dziacky, Adam. . . . .	39	Gillespie, Kevin. . . . .	50
Clare, Ann. . . . .	11	Dziko, Svjetlana . . . . .	8,10,18	Givens, Jami . . . . .	11
Clare, David . . . . .	33			Glathar, Matthew. . . . .	28
Clark, Thomas . . . . .	32	<b>E</b>		Gogela, Steven. . . . .	29
Cogswell, Brenda. . . . .	54	Ehresman, Scott. . . . .	61	Gotschall, Jeffrey . . . . .	55
Colling, Christopher . . . . .	50	Eisenhauer, Darla. . . . .	30	Gove, Nicholas. . . . .	34
Cook, Jenna . . . . .	21	Elieff, Michelle . . . . .	39	Graul, Thomas . . . . .	32
Coon, Jennifer . . . . .	12	Elliott, Jennifer . . . . .	51	Graybill, Sara . . . . .	57
Creal, Andrew . . . . .	43	Ensz, Amanda . . . . .	52	Green, Nathan . . . . .	25
Creevan, Molly. . . . .	20	Ensz, Andrew . . . . .	52	Green, Sydney . . . . .	42
Crockett, Libby. . . . .	58	Ensz, Gary. . . . .	52	Greisen, Joel. . . . .	7,41
Cruce, Alicia. . . . .	41	Essay, Phillip. . . . .	36	Grieb, Brett. . . . .	25
Cruz, Gisele. . . . .	50	Evans, Rebecca . . . . .	42	Griffin, Mark . . . . .	22
Cullan II, Daniel . . . . .	33	Evans, Sarah. . . . .	40	Grinstead, Arthur. . . . .	18
Curtis, Mary . . . . .	50			Gurule, Nathan . . . . .	43
		<b>F</b>		Gutierrez, Josue . . . . .	18, 56
<b>D</b>		Fallick, John . . . . .	23		
Dalton, Timothy. . . . .	21	Faltys, Megan. . . . .	55	<b>H</b>	
Damme, Ana . . . . .	53	Farlee, Jessica. . . . .	31	Haake, Erica . . . . .	58
Damme, Clayton . . . . .	36	Felt, Jonathan. . . . .	50	Habegger, Molly . . . . .	43
Daro, Robert . . . . .	56	Felton, Tyler . . . . .	63	Haden, Linsey . . . . .	19
Davenport, Yvonne. . . . .	30	Fiedler, Douglas. . . . .	48	Hadland, Daniel. . . . .	50
Davies, Corrie. . . . .	40	Fischer, Thomas. . . . .	8,18	Haefele, Kyle . . . . .	21
Davis, Jason . . . . .	41	Fischer, Timothy. . . . .	18	Hanlan, Nicklaus . . . . .	20
Davis, Cassandra . . . . .	62	Fitzke, Greg . . . . .	13, 24	Hanna-Slagle, Colleen . . . . .	40
DeHaan, Kenyon . . . . .	54	Finn, Daniel . . . . .	50	Hao, Zijun. . . . .	23
DeHaan, Ryan . . . . .	38	Fornander, Wade. . . . .	19	Harms, Jessica . . . . .	15
Dell, Carrie . . . . .	41	Fossen, Katie . . . . .	7,30	Harris, Justin. . . . .	33
DeNell, Nathan . . . . .	21	Fox, Douglas . . . . .	54	Hartwig, Rick . . . . .	9
Detter, Amber . . . . .	54	Ford, Edward. . . . .	63	Hatch, Jessica. . . . .	62
DeWald, Michael. . . . .	50	Ford, John. . . . .	63	Hawkins II, J. Chris. . . . .	29
Dewey, Tanner . . . . .	44	Freeman, Matthew . . . . .	33	Hayden, Derek. . . . .	57
Deyhle, Ethan. . . . .	45	Freitag, Brett. . . . .	44	Hazuka, Ann. . . . .	54
Diamant, David . . . . .	29	French, Sarah. . . . .	40	Heibel, Mark. . . . .	15
Diersen, Sarah . . . . .	42	Frerichs, Lynae. . . . .	40	Heidrick, Gregory . . . . .	30
Dietze, Jared . . . . .	60	Frueling, Richard . . . . .	57	Heiman, Erica. . . . .	44
Diffendaffer, Clark . . . . .	50	Fuehrer, Neil. . . . .	38	Hejtmanek, Nichole . . . . .	35
Dimmitt, Kathryn. . . . .	54	Fuller, Redgy. . . . .	36	Helms, Thomas . . . . .	41
Discoe, Edward . . . . .	55			Hemje, Mackenzie. . . . .	59
Dodson, Elizabeth . . . . .	20			Henning, Jonathan . . . . .	52

Henry, Mitchell . . . . .	32,46	Jouvenat, Suzanne . . . . .	12	Lattimer, Kaitlyn . . . . .	40
Henslee, Brandon . . . . .	52	Judson, Michael . . . . .	11	Law IV, Joseph . . . . .	58
Hentzen, Douglas . . . . .	60	Jumaah, Kuliar . . . . .	20	Law, Melissa . . . . .	58
Herbek, Douglas . . . . .	58	<b>K</b>		Lawson, Keith . . . . .	34
Herbig, Amy . . . . .	62	Kadavy, Tracy . . . . .	11	Lawton, William . . . . .	22
Herrold, Alicia . . . . .	11	Kavanaugh, Doug . . . . .	43	Lee, David . . . . .	22
Heyl, Rachel . . . . .	43	Keating, Alexandra . . . . .	40	Lee, Sukchan . . . . .	33
Hodge, Dennis . . . . .	30	Keim, Christine . . . . .	19	LeGrande, Amber . . . . .	43
Hollis, Jeffery . . . . .	19	Keller, Mark . . . . .	60	Lemek, Scott . . . . .	57
Homes, Taylor . . . . .	42	Keller, Weston . . . . .	23	Lemke, Luke . . . . .	55
Hopkins, Harvey . . . . .	48	Kelly, Jacqueline . . . . .	49	Lenertz, Evan . . . . .	61
Hosein, Jeremy . . . . .	29	Kelly, Quinton . . . . .	27, 36, 50	Lepinski, Andrew . . . . .	52
Houston, Stacey . . . . .	40	Kenna, Kathryn . . . . .	58	Lester, Jr., Darrell (Darek) . . . . .	38
Howe, Janet . . . . .	60	Kennedy, Kathryn . . . . .	24	Lewis, Amanda . . . . .	11
Hrnicek, Matthew . . . . .	22	Kimberly, Sarah . . . . .	43	Li, Yongchao . . . . .	38
Huffman, Michael . . . . .	17	Kinburg, Kirk . . . . .	9	Liebsack, Brittany . . . . .	40
Hung, Benjamin . . . . .	10, 24	King, Tia Nordyke . . . . .	12	Linde, Erin . . . . .	39
Hunke, Ethan . . . . .	54	Kiple, David . . . . .	50	Lintel, Nicholas . . . . .	38
Hunke-Lomax, Megan . . . . .	59	Kipp, Rebecca . . . . .	54	Lionberger, Jack . . . . .	19
Hurlbut, Patrick . . . . .	34	Kipp, Wyatt . . . . .	54	Livingston, Andrew . . . . .	29
Husen, Steven . . . . .	57	Kirkpatrick, Tara . . . . .	52	Ljunggren, Chandra . . . . .	30
Hutchins, Derek . . . . .	21	Kleeman, Heather . . . . .	16	Long, Jake . . . . .	33
<b>I</b>		Kliewer, Jacalyn . . . . .	44	Lorenzen, Garret . . . . .	20
Ilyas, Izdeen . . . . .	20	Knapp, Amanda . . . . .	41	Ludwig, William . . . . .	50
Ingham, Scott . . . . .	26	Knoell, Oliver . . . . .	10, 24	Lukens, Scott . . . . .	57
Ingham, William . . . . .	50	Knoell, Sophia . . . . .	28	Luu, Minh . . . . .	50
Israel, Michael . . . . .	16	Knooihuizen, Sally . . . . .	22	<b>M</b>	
<b>J</b>		Knox, Stacey . . . . .	25	Machado, Gustavo . . . . .	34, 46
Jackman, Kaylyn . . . . .	32	Koch, Douglas . . . . .	34	Machado, Sandra . . . . .	50
Jacobsen, Dorothea . . . . .	16	Koch, Robert . . . . .	8,39	Mahoney, Nicolle . . . . .	30
Jacobsen, Matthew . . . . .	19	Kohles, Alicia . . . . .	54	Maikranz, Julie . . . . .	12
Jacobson, Jessica . . . . .	45	Kolegraff, Keli . . . . .	46	Majerus, John . . . . .	21
Jain, Ritoo . . . . .	26	Konopasek, Cody . . . . .	53	Manning, Michelle . . . . .	21
Jarrett, Jeffrey . . . . .	48	Korpas, Denes . . . . .	13	Markman, James . . . . .	14
Jaskierny, David . . . . .	39	Kosse, Stacy . . . . .	40	Markus, Wayne . . . . .	39
Javadzadeh, Barry . . . . .	38	Krajewski, Luke . . . . .	20	Marshall, Lee . . . . .	50
Jobst, Michael . . . . .	14	Krejci-Reed, Kara . . . . .	47	Martin, Benjamin . . . . .	19
Johnson, Jenifer . . . . .	54	Krenk, Caleb . . . . .	42	Martin, Ryan . . . . .	48
Johnson, Kristen . . . . .	60	Kreshel, Charles . . . . .	16	Martin, Steve . . . . .	13
Johnson, Kristy . . . . .	20	Krier, Kelly . . . . .	14	Martin, Todd . . . . .	8,31
Johnson, Molly . . . . .	58	Kroeger, Viola . . . . .	20	Martinez, Alecia . . . . .	31
Johnson, Susan . . . . .	21	<b>L</b>		Maslonka, Matt . . . . .	48
Johnson, William . . . . .	48	Lambert, Alexis . . . . .	32	Matthias, M. Sarah . . . . .	40
Jones-Jobst, Sian . . . . .	8,40	Lamp, Abigail . . . . .	11	Mays, Minh Yen . . . . .	38
		Lange, Evan . . . . .	50	McClung, Stephanie . . . . .	44

McCoy, Hannah . . . . .	45	<b>O</b>	Rathje, Clint . . . . .	23
McGuffey, Logan . . . . .	52	Obear, Julie . . . . .	Rawson, Adam . . . . .	45
McHam, Scott . . . . .	25	Odulate, Ayodale . . . . .	Razdan, Petra . . . . .	9
McKeag, Burt . . . . .	62	Olberding, Brad . . . . .	Razdan, Rahul . . . . .	7,27,36,50
McKeag, Pam . . . . .	62	Olsen-Triplett, Geralee . . . . .	Reese, Charles . . . . .	38
McMillan, Holly . . . . .	26	Ostdiek, Seth . . . . .	Reichmuth, Kevin . . . . .	48
McQuistan, Jon . . . . .	55	Ortlieb, Carol . . . . .	Reida, Mark . . . . .	26
Meduna, David . . . . .	40	Ourada, Azia . . . . .	Reimer, Curtis . . . . .	59
Messbarger, Robert . . . . .	62	Overcash, Julie . . . . .	Reynolds, Sonya . . . . .	40
Method, Brooklynn . . . . .	43	Owen, Benjamin . . . . .	Rice, Donald . . . . .	51
Mettenbrink, Lindsey . . . . .	58	Owen, Daniel . . . . .	Richardson, Abby . . . . .	62
Meyer, Allissa . . . . .	45	Ozaki, Marshall . . . . .	Rife, Christopher . . . . .	22
Meyer, Zachary . . . . .	57		Riggle, Jake . . . . .	48
Midathada, Madhu . . . . .	25	<b>P</b>	Riley, Tim . . . . .	12
Miller, Bryan . . . . .	11	Pae, Susan . . . . .	Ripa, Daniel . . . . .	33, 35
Morin, Peter . . . . .	18	Pace, Michael . . . . .	Rivera, Edmundo . . . . .	23
Morrison, Jackson . . . . .	20	Papik, Terra . . . . .	Rixen, Jordan . . . . .	32
Mosalpuria, Kailash . . . . .	25	Pecha, Janelle . . . . .	Roat, James . . . . .	22
Mueller, Meghan . . . . .	43	Pehrson, Jared . . . . .	Rodehorst, Marie . . . . .	55
Muhleisen, Alicia . . . . .	30	Pekny, Craig . . . . .	Rodgers-Olson, Debra . . . . .	44
Mulka, Joseph . . . . .	33	Petersen, Paul . . . . .	Rohr, Carrie . . . . .	42
Muller, Raegan . . . . .	54	Peterson, Cary . . . . .	Rojas-Bita, Maria . . . . .	57
Munk, Devin . . . . .	61	Peterson, Erica . . . . .	Rose, Marcie . . . . .	12
Murdock, Shawn . . . . .	63	Peterson, Lisa . . . . .	Rosenberger, Kate . . . . .	35
Murer, Lauren . . . . .	38	Pham, Ted . . . . .	Roth, Michael . . . . .	22
Myers, Kyle . . . . .	62	Piper, Ali . . . . .	Rundlett, Rebecca . . . . .	13
		Placek, Debra . . . . .		
<b>N</b>		Plachy, Lewis . . . . .	<b>S</b>	
Nagengast, Stephen . . . . .	23	Pohlmeier, Andrew . . . . .	Saathoff, Steven . . . . .	17
Nakayama, Kristyn . . . . .	45	Pomajzl, A.J. . . . .	Sandmeier, Jessica . . . . .	30
Narayan, Madhav . . . . .	52	Potts, Jason . . . . .	Saner, Danielle . . . . .	41
Neamu, Radu . . . . .	48	Praus, Alexander . . . . .	Sanley, Beth . . . . .	19
Nelson, Benton . . . . .	35	Pritchard, Logan . . . . .	Santarlas, Valentine . . . . .	20
Nelson, Michael . . . . .	63	Pritschau, Jami . . . . .	Sauberan, Donald . . . . .	32
Nelson, Shelley . . . . .	41	Puente, John . . . . .	Sawtelle, Bradley . . . . .	17
Neri, Emily . . . . .	31		Schmitz, Erin . . . . .	41
Netz, Douglas . . . . .	13	<b>Q</b>	Schram, David . . . . .	59
Neuhaus, Hannah . . . . .	9	Qasimyar, Humaira . . . . .	Schroder, Aly . . . . .	20
Newton, David . . . . .	22		Schroeder, Caleb . . . . .	60
Nguyen, Thao . . . . .	18	<b>R</b>	Schulte, Michael . . . . .	18
Niazi, Ismatt . . . . .	47	Rademacher, Steven . . . . .	Seifert, Brandon . . . . .	34
Niazi, Sahra . . . . .	40	Raghuraman, Dipika . . . . .	Seizys, Michelle . . . . .	60
Nieveen, Stacie . . . . .	54	Ramaekers, Kathy . . . . .	Sell, Michelle . . . . .	55
Nollendorfs, Alisa . . . . .	19	Ramirez, Horacio Alvarez . . . . .	Sellon, Janet . . . . .	21
Nooka, Uma . . . . .	16	Ramos-Gonzalez, Nishma . . . . .	Semin, Shawn . . . . .	26
Nora, James . . . . .	26	Rasmussen, Adam . . . . .		

Setlak, Amanda . . . . .	11	Tewes, Douglas . . . . .	34	Wardyn, Seth . . . . .	57
Sextro, Greg . . . . .	57	Thelen, Kathryn . . . . .	61	Warner, Landon . . . . .	43
Shahan, Andrew . . . . .	16	Thomas, J. Reggie . . . . .	22	Warrier, Rugmini . . . . .	28
Sherrets-Ratigan, Noelle . . . . .	60	Thomas, Kaleb . . . . .	28	Waters, David . . . . .	61
Sholes, Kirstin . . . . .	58	Thomas, Sherri . . . . .	10	Webb, Brad . . . . .	7,34,35
Singh, Sukhjinder . . . . .	50	Thompson, Alan . . . . .	43	Webb, Brady . . . . .	61
Smith, Daniel . . . . .	26	Thomsen, Jean . . . . .	22	Webb, Brandon . . . . .	7, 21
Smith, Shane . . . . .	61	Thomsen, Samuel . . . . .	32	Weber, Jason . . . . .	34
Snodgrass, Megan . . . . .	12	Tilford, Joni . . . . .	25	Weir, Gina . . . . .	14
Solache, Alberto . . . . .	58	Toalson, Brian . . . . .	38	Wells, Mark . . . . .	22
Somers-Dehaney, Aleeta . . . . .	63	Tobar, Alison . . . . .	45	Wemhoff, Chad . . . . .	43
Sorenson, Madeleine . . . . .	45	Todd, Dane . . . . .	33	Wenburg, Justin . . . . .	60
Spencer, Jonathan . . . . .	48	Tomes, Daniel . . . . .	29	Wergin, Brett . . . . .	16
Springman, Sue . . . . .	40	Tomjack, Jeffrey . . . . .	31	White, Andrew . . . . .	11
Spry, Leslie . . . . .	28	Tran, Son . . . . .	28	White, Kimberly . . . . .	40
Spurgeon, Douglas . . . . .	36	Trapp, John . . . . .	48	White, Tyler . . . . .	57
Stamm, Nicole . . . . .	54	Triggs, Jodi . . . . .	7,26	Whitten, C. Weston . . . . .	36
Stark, Gerold . . . . .	26	Turner, Rhonda . . . . .	11	Wibbels, Paul . . . . .	60
Stark, Philip . . . . .	20			Wiebusch, Lance . . . . .	52
States, Douglas . . . . .	19	<b>U</b>		Wiese, Ben . . . . .	48
Stavas, Mark . . . . .	37, 49	Uzee, Megan . . . . .	50	Williams, George . . . . .	11
St. Clair, Keli . . . . .	44			Williams, Kelsey . . . . .	13
Steinhauer, Jon . . . . .	38	<b>V</b>		Wilson, Scott . . . . .	21
Steinke, Rebecca . . . . .	57	Valentine, Kari . . . . .	59	Wiltfong, David . . . . .	52
Stoecker, Krista . . . . .	57	Vance, Laura . . . . .	22	Wineinger, Michelle . . . . .	41
Stratman, Aaron . . . . .	12	Vande Guchte, Robert . . . . .	34, 35	Wolfe, Dana . . . . .	35
Streit, Adam . . . . .	33, 34	Vander Woude, Eric . . . . .	27,36,50	Wood, Jonathan . . . . .	20
Sullivan, Christina . . . . .	53	Van Ert, Gary . . . . .	16	Wood, Matthew . . . . .	32
Sullivan, Emily . . . . .	20	Van Pelt, Jenna . . . . .	30	Woodhead, Benjamin . . . . .	34
Sullivan III, Michael . . . . .	9	Van Roekel, Nick . . . . .	34	Woodward, Amanda . . . . .	37
Sullivan, Timothy . . . . .	17	Vaziri, Irfan . . . . .	25	Woodward, Suzette . . . . .	39
Summers, Matthew . . . . .	56	Vettel, Kenneth . . . . .	57	Wurtz, Richard . . . . .	18
Sutton, Elizabeth . . . . .	15	Vettel, Tyler . . . . .	57		
Sutton, Gregory . . . . .	32	Viers, Charles . . . . .	50	<b>Y</b>	
Sutton, Leigh . . . . .	15	Vieth, Chad . . . . .	57	Yadav, Swetha . . . . .	62
Sutton, Margaret Kontras . . . . .	15	Violi, Louis . . . . .	48	Yiee, Kevin . . . . .	49
Sutton, Vincent . . . . .	32	Voigt, Charles . . . . .	23		
Swanson, Scott . . . . .	33	Volin, Steven . . . . .	33, 35	<b>Z</b>	
Sypal, Joshua . . . . .	56	Vonderfecht, Thomas . . . . .	57	Zach, Kelly . . . . .	36
Szalewski, Robert . . . . .	9			Zahoor, Haris . . . . .	25
		<b>W</b>		Zaruba, Dale . . . . .	55
<b>T</b>		Wagner, Kirsten . . . . .	53	Zaruba, Michael . . . . .	52
Tabatabai, Anthony . . . . .	10, 24	Wahlmeier, Steven . . . . .	33, 35	Zegers, Pamela . . . . .	40
Taddeucci, Raymond . . . . .	10, 24	Walker, Aubrey . . . . .	21	Zhang, Y. Frank . . . . .	28
Teichmeier, Tyler . . . . .	38	Wallen, Alaini . . . . .	20	Zimmerman, Timmothy . . . . .	59
Ternent, Katherine . . . . .	47	Walsh, Michelle . . . . .	41		



# SUPPORTING AND GROWING INDEPENDENT MEDICINE

Lincoln • Auburn • Bellevue • Crete • Grand Island  
Hastings • Holdrege • Kearney • Lexington North Platte  
Columbus • David City • Fremont

402.261.9530  
[www.OneHealthNE.com](http://www.OneHealthNE.com)  
4600 Valley Road, Suite 400  
Lincoln, NE 68510